

ELECTRICAL BOARDS  
AND CONSULTING  
FOR REFRIGERATION

CATALOGUE  
**2025**





diecielectric.it

# INDEX

## SERIES

### UM Electric panels for condensing unit

UM16M	Single-phase compressor max 16A /single-phase condenser fans 850W	p.9
UM4	Three-phase compressor from 1 ... 4A /single-phase condenser fans 850W	p.9
UM12	Three-phase compressor from 3 ... 12A /single-phase condenser fans 850W	p.9
UM16	Three-phase compressor from 4 ... 16A /single-phase condenser fans 850W	p.11
UM25	Three-phase compressor from 6 ... 25A / 2 single-phase condenser fans/ three-phase 1200/2000W	p.11
UM40	Three-phase compressor from 10 ... 40A / 3 single-phase condenser fans/ three-phase 1200/2000W	p.11
UM45	Three-phase compressor from 12,5 ... 50A / 3 single-phase condenser fans/ three-phase 1200/2000W	p.13
UM50	Three-phase compressor from 12 ... 50A / start-up PWS 3 fans single/ three-phase 1200/2000W	p.13
UM80	Three-phase compressor from 20 ... 80A / start-up PWS 3 fans single/ three-phase 1200/2000W	p.13

## SERIES

### GFM Electric panels for refrigeration unit and complete single-phase cold room with controller Dieci Electric

GFM	Single-phase compressor max 16A / basic model	p.17
GFM MD	Single-phase compressor max 16A with integrated differential magnetothermic switch	p.17
GFM SB	Single-phase compressor max 16A with three phase enhanced defrost 8000W (3*2600W)	p.17

## SERIES

### GFM ELECTRONIC Electric panels for refrigeration unit and complete single-phase cold room with controller Dieci Electric and single pole electronic valve

GFM electronic	Single-phase compressor max 16A / basic model	p.21
GFM MD electronic	Single-phase compressor max 16A with integrated differential magnetothermic switch	p.21
GFM SB electronic	Single-phase compressor max 16A with three phase enhanced defrost 8000W (3*2600W)	p.21



SERIES

GF Electric panels for refrigeration unit and complete three phase cold room with controller Dieci Electric

GF4	Three-phase compressor from 1 ... 4A /single-phase condenser fans 850W electric defrost 6,50 kW / evaporating fans 850W	p.25
GF12	Three-phase compressor from 3 ... 12A /single-phase condenser fans 850W electric defrost 10,50kW / evaporating fans 850W	p.25
GF16	Three-phase compressor from 4 ... 16A /single-phase condenser fans 850W electric defrost 13kW / evaporating fans 850W	p.25
GF25	Three-phase compressor from 6 ... 25A / 2 single-phase condenser fans/ three-phase 1200/2000W / electric defrost 18kW / 1 single-phase evaporating fan/ three-phase 1200/2000W	p.27
GF40	Three-phase compressor from 10 ... 40A /single-phase condenser fans/ three-phase 1200/2000W / electric defrost 22kW / 3 single-phase condenser fans/ three-phase 1200/2000W	p.27
GF50	Three-phase compressor from 12,5 ... 50A / 3 single-phase condenser fans/ three-phase 1200/2000W / electric defrost 33kW / 3 single-phase condenser fans/ three-phase 1200/2000W	p.27

SERIES

GF ELECTRONIC Electrical panels for refrigeration unit and complete three phase cold room with Dieci Electric controller and single pole electronic valve

GF4 ELECTRONIC	Three-phase compressor from 1 ... 4A /single-phase condenser fans 850W electric defrost 6,50 kW / evaporating fans 850W	p.31
GF12 ELECTRONIC	Three-phase compressor from 3 ... 12A /single-phase condenser fans 850W electric defrost 10,50kW / evaporating fans 850W	p.31
GF16 ELECTRONIC	Three-phase compressor from 4 ... 16A /single-phase condenser fans 850W electric defrost 13kW / evaporating fans 850W	p.31

SERIES

GF D Electrical panels for refrigeration unit and complete three phase cold room with Dixell controller

GF4 D	Three-phase compressor from 1 ... 4A /single-phase condenser fans 850w / electric defrost 6,50kW / evaporating fans 850W	p.35
GF12 D	Three-phase compressor from 3 ... 12A /single-phase condenser fans 850W / electric defrost 10,50kW / evaporating fans 850W	p.35
GF16 D	Three-phase compressor from 4 ... 16A /single-phase condenser fans 850W / electric defrost 13kW / evaporating fans 850W	p.35
GF25 D	Three-phase compressor from 6 ... 25A / 2 single-phase condenser fans/ three-phase 1200/2000W / electric defrost 18kW / 1 single-phase evaporating fan/ three-phase 1200/2000W	p.37

GF40 D	Three-phase compressor from 10 ... 40A / 2 single-phase condenser fans/ three-phase 1200/2000W / electric defrost 22kW / 3 single-phase condenser fans/ three-phase 1200/2000W	p.37
--------	--	------

GF50 D	Three-phase compressor from 12,5 ... 50A / 3 single-phase condenser fans/ three-phase 1200/2000W / electric defrost 33kW / 3 single-phase condenser fans/ three-phase 1200/2000W	p.37
--------	--	------

SERIES

GF C Electric panels for refrigeration unit and complete three phase cold room with Carel controller

GF4 C	Three-phase compressor from 1 ... 4A /single-phase condenser fans 850w / electric defrost 6,50kW / evaporating fans 850W	p.41
-------	---	------

GF12 C	Three-phase compressor from 3 ... 12A /single-phase condenser fans 850W / electric defrost 10,50kW / evaporating fans 850W	p.41
--------	---	------

GF16 C	Three-phase compressor from 4 ... 16A /single-phase condenser fans 850W / electric defrost 13kW / evaporating fans 850W	p.41
--------	--	------

GF25 C	Three-phase compressor from 6 ... 25A / 2 single-phase condenser fans/ three-phase 1200/2000W / electric defrost 18kW / 1 single-phase evaporating fan/ three-phase 1200/2000W	p.43
--------	--	------

GF40 C	Three-phase compressor from 10 ... 40A / 2 single-phase condenser fans/ three-phase 1200/2000W / electric defrost 22kW / 3 single-phase condenser fans/ three-phase 1200/2000W	p.43
--------	--	------

GF50 C	Three-phase compressor from 12,5 ... 50A / 3 single-phase condenser fans/ three-phase 1200/2000W / electric defrost 33kW / 3 single-phase condenser fans/ three-phase 1200/2000W	p.43
--------	--	------

SERIES

GF E Electric panels for refrigeration unit and complete three phase cold room with Eliwell controller

GF4 E	Three-phase compressor from 1 ... 4A /single-phase condenser fans 850w / electric defrost 6,50kW / evaporating fans 850W	p.47
-------	---	------

GF12 E	Three-phase compressor from 3 ... 12A /single-phase condenser fans 850W / electric defrost 10,50kW / evaporating fans 850W	p.47
--------	---	------

GF16 E	Three-phase compressor from 4 ... 16A /single-phase condenser fans 850W / electric defrost 13kW / evaporating fans 850W	p.47
--------	--	------

GF25 E	Three-phase compressor from 6 ... 25A / 2 single-phase condenser fans/ three-phase 1200/2000W / electric defrost 18kW / 1 single-phase evaporating fan/ three-phase 1200/2000W	p.49
--------	--	------

GF40 E	Three-phase compressor from 10 ... 40A / 2 single-phase condenser fans/ three-phase 1200/2000W / electric defrost 22kW / 3 single-phase condenser fans/ three-phase 1200/2000W	p.49
--------	--	------

GF50 E	Three-phase compressor from 12,5 ... 50A / 3 single-phase condenser fans/ three-phase 1200/2000W / electric defrost 33kW / 3 single-phase condenser fans/ three-phase 1200/2000W	p.49
--------	--	------





SERIES

GF CR Electric panels for refrigeration unit and complete three phase cold room with Remote Controller

GF4 CR	Three-phase compressor from 1 ... 4A / single-phase condenser fans 850w / electric defrost 6,50kW / evaporating fans 850W	p.53
GF12 CR	Three-phase compressor from 3 ... 12A / single-phase condenser fans 850W / electric defrost 10,50kW / evaporating fans 850W	p.53
GF16 CR	Three-phase compressor from 4 ... 16A / single-phase condenser fans 850W / electric defrost 13kW / evaporating fans 850W	p.53
GF25 CR	Three-phase compressor from 6 ... 25A / 2 single-phase condenser fans/ three-phase 1200/2000W / electric defrost 18kW / 1 single-phase evaporating fan/ three-phase 1200/2000W	p.55
GF40 CR	Three-phase compressor from 10 ... 40A / 2 single-phase condenser fans/ three-phase 1200/2000W / electric defrost 22kW / 3 single-phase condenser fans/ three-phase 1200/2000W	p.55
GF50 CR	Three-phase compressor from 12,5 ... 50A / 3 single-phase condenser fans/ three-phase 1200/2000W / electric defrost 33kW / 3 single-phase condenser fans/ three-phase 1200/2000W	p.55

SERIES

FC Electrical panels for cold room only three-phase evaporating unit with single and double evaporator with Dieci Electric controller

FC6	Electric defrost 6,5 kW / single-phase condenser fans/ three-phase max 2000/4000W	p.59
FC10	Electric defrost 10 kW / single-phase condenser fans/ three-phase max 2000/4000W	p.59
FC16	Electric defrost 16 kW / single-phase condenser fans/ three-phase max 2000/4000W	p.59
FC21	Electric defrost 21 kW / single-phase condenser fans/ three-phase max 3000/6000W	p.61
FC32	Electric defrost 32 kW / single-phase condenser fans/ three-phase max 4*1500/4*3000W	p.61
FC41	Electric defrost 41 kW / single-phase condenser fans/ three-phase max 4*1500/4*3000W	p.61
FC66	Double evaporator and double electric defrost 6,5kW / 2 single-phase condenser fans/ three-phase max 2000/4000W / Consent 1 o 2 units	p.63
FC1010	Double evaporator and double electric defrost 10kW / 2 single-phase condenser fans/ three-phase max 2000/4000W / Consent 1 o 2 units	p.63
FC1616	Double evaporator and double electric defrost 16kW / 2 single-phase condenser fans/ three-phase max 2000/4000W / Consent 1 o 2 units	p.63

SERIES

FC ELECTRONIC Electrical panels for cold room only three-phase evaporating unit with single evaporator with Dieci Electric controller and single pole electric valve

FC6 ELECTRONIC	Electric defrost 6,5 kW / single-phase condenser fans/ three-phase max 2000/4000W	p.67
FC10 ELECTRONIC	Electric defrost 10 kW / single-phase condenser fans/ three-phase max 2000/4000W	p.67
FC16 ELECTRONIC	Electric defrost 16 kW / single-phase condenser fans/ three-phase max 2000/4000W	p.69
FC21 ELECTRONIC	Electric defrost 21 kW / single-phase condenser fans/ three-phase max 3000/6000W	p.69

SERIES

FC D Electrical panels for cold room only three-phase evaporating unit with single and double evaporator with Dixell controller

FC6 D	Electric defrost 6,5 kW / single-phase condenser fans/ three-phase max 2000/4000W	p.73
FC10 D	Electric defrost 10 kW / single-phase condenser fans/ three-phase max 2000/4000W	p.73
FC16 D	Electric defrost 16 kW / single-phase condenser fans/ three-phase max 2000/4000W	p.73
FC21 D	Electric defrost 21 kW / single-phase condenser fans/ three-phase max 3000/6000W	p.75
FC32 D	Electric defrost 32 kW / single-phase condenser fans/ three-phase max 4*1500/4*3000W	p.75
FC41 D	Electric defrost 41 kW / single-phase condenser fans/ three-phase max 4*1500/4*3000W	p.75
FC66 D	Double evaporator and double electric defrost 6,5kW / 2 single-phase condenser fans/ three-phase max 2000/4000W / Consent 1 o 2 units	p.77
FC1010 D	Double evaporator and double electric defrost 10kW / 2 single-phase condenser fans/ three-phase max 2000/4000W / Consent 1 o 2 units	p.77
FC1616 D	Double evaporator and double electric defrost 16kW / 2 single-phase condenser fans/ three-phase max 2000/4000W / Consent 1 o 2 units	p.77



SERIES

FC C

Electrical panels for cold room only three-phase evaporating unit with single and double evaporator with Carel controller

FC6 C	Electric defrost 6,5 kW / single-phase condenser fans/ three-phase max 2000/4000W	p.81
FC10 C	Electric defrost 10 kW / single-phase condenser fans/ three-phase max 2000/4000W	p.81
FC16 C	Electric defrost 16 kW / single-phase condenser fans/ three-phase max 2000/4000W	p.81
FC21 C	Electric defrost 21 kW / single-phase condenser fans/ three-phase max 3000/6000W	p.83
FC32 C	Electric defrost 32 kW / single-phase condenser fans/ three-phase max 4*1500/4*3000W	p.83
FC41 C	Electric defrost 41 kW / single-phase condenser fans/ three-phase max 4*1500/4*3000W	p.83
FC66 C	Double evaporator and double electric defrost 6,5kW / 2 single-phase condenser fans/ three-phase max 2000/4000W / Consent 1 o 2 units	p.85
FC1010 C	Double evaporator and double electric defrost 10kW / 2 single-phase condenser fans/ three-phase max 2000/4000W / Consent 1 o 2 units	p.85
FC1616 C	Double evaporator and double electric defrost 16kW / 2 single-phase condenser fans/ three-phase max 2000/4000W / Consent 1 o 2 units	p.85

SERIES

FC E

Electrical panels for cold room only three-phase evaporating unit with single and double evaporator with Eliwell controller

FC6 E	Electric defrost 6,5 kW / single-phase condenser fans/ three-phase max 2000/4000W	p.89
FC10 E	Electric defrost 10 kW / single-phase condenser fans/ three-phase max 2000/4000W	p.89
FC16 E	Electric defrost 16 kW / single-phase condenser fans/ three-phase max 2000/4000W	p.89
FC21 E	Electric defrost 21 kW / single-phase condenser fans/ three-phase max 3000/6000W	p.91
FC32 E	Electric defrost 32 kW / single-phase condenser fans/ three-phase max 4*1500/4*3000W	p.91
FC41 E	Electric defrost 41 kW / single-phase condenser fans/ three-phase max 4*1500/4*3000W	p.91
FC66 E	Double evaporator and double electric defrost 6,5kW / 2 single-phase condenser fans/ three-phase max 2000/4000W / Consent 1 o 2 units	p.93
FC1010 E	Double evaporator and double electric defrost 10kW / 2 single-phase condenser fans/ three-phase max 2000/4000W / Consent 1 o 2 units	p.93
FC1616 E	Double evaporator and double electric defrost 16kW / 2 single-phase condenser fans/ three-phase max 2000/4000W / Consent 1 o 2 units	p.93

SERIES

CS

Electric panels for cold rooms (for supermarkets)

CS3 C	Electric defrost 3kW / single-phase condenser fans / electronic Carel	p.97
CS3 D	Electric defrost 3kW / single-phase condenser fans / electronic Dixell	p.97
CS3 E	Electric defrost 3kW / single-phase condenser fans / electronic Eliwell	p.97
CS10 C	Electric defrost 10kW / single-phase condenser fans / electronic Carel	p.99
CS10 D	Electric defrost 10kW / single-phase condenser fans / electronic Dixel	p.99
CS10 E	Electric defrost 10kW / single-phase condenser fans / electronic Eliwell	p.99

SERIES

BS

Electric panels for refrigerated counter

BS3 C	Electric defrost 3kW / single-phase condenser fans / electronic Carel	p.103
BS3 D	Electric defrost 3kW / single-phase condenser fans / electronic Dixell	p.103
BS3 E	Electric defrost 3kW / single-phase condenser fans / electronic Eliwell	p.103
BS10 C	Electric defrost 10kW / single-phase condenser fans / electronic Carel	p.105
BS10 D	Electric defrost 10kW / single-phase condenser fans / electronic Dixel	p.105
BS10 E	Electric defrost 10kW / single-phase condenser fans / electronic Eliwell	p.105





SERIES

# UM

Electric panel for condensing unit

## PANEL BOARD SERIES

UM16M \_ UM4 \_ UM12 \_ UM16  
UM25 \_ UM40 \_ UM45 \_ UM50 \_ UM80

UM series for management of condensing units has been designed for a simple and flexible use. All devices of the UM series are assembled with the best materials on the market. The overall quality, although very high, does not affect the good relationship *value for money*. The use of electronic thermal and magnetothermic protection makes it possible to manage multiple applications with very few codes.

PANEL CODE	UM16M	UM4	UM12
DESCRIPTION	Electric panel for condensing unit with single-phase compressor max 10A and fans.	Electric panel for condensing unit with three phase compressor with adjustment range from1 ...4A and single phase fans.	Electric panel for condensing unit with three phase compressor with adjustment range from3 ...12A and single phase fans.
TECHNICAL FEATURES			
BOX SIZE	220*275*140 mm	220*275*140 mm	220*275*140 mm
BOX SIZE COMPLETE WITH DOOR LOCK	220*275*175 mm	220*275*175 mm	220*275*175 mm
WEIGHT	3Kg	4Kg	4Kg
BOX LEVEL OF PROTECTION	IP65	IP65	IP65
RELATIVE HUMIDITY OF THE ENVIRONMENT	<90% RH	<90% RH	<90% RH
STORAGE TEMPERATURE	-10÷+60°C	-10÷+60°C	-10÷+60°C
WORKING TEMPERATURE	-5÷+45°C	-5÷+45°C	-5÷+45°C
SUPPLY	230V AC ±10% 50-60Hz	400V AC ±10% 50-60Hz	400V AC ±10% 50-60Hz
COMPRESSOR PROTECTION	Magnetothermic	Electric thermal relay	Electric thermal relay
SIGNALING AND ALARM	Led	Led	Led
INPUTS			
PRESSURE SWITCH-HIGH/ LOW PRESSURE	Standard	Standard	Standard
KRIWAN	Standard	Standard	Standard
FUNCT. PUMP DOWN/ THERMOSTAT	Standard	Standard	Standard



PANEL CODE	UM16M	UM4	UM12
------------	-------	-----	------

OUTPUT

COMPRESSOR	Single phase Max 10A	Three-phase adjustable range from 1...4A	Three-phase adjustable range from 3...12A
CONDENSING FANS	Single phase 850W	Single phase 850W	Single phase 850W
SOLENOIDE FAN	Standard	Standard	Standard

OPTIONAL ACCESSORIES

ALARM RELAY	✓	✓	✓
-------------	---	---	---



UM16M \*



UM4 \*



UM12 \*

PANEL CODE	UM16	UM25	UM40
------------	------	------	------

DESCRIPTION

	Electric panel for condensing unit with three phase compressor with adjustment rand from 1...16A and single phase fans.	Electric panel for condensing unit with three phase compressor with adjustment range from 6..25A and single/ three phase fans	Electric panel for condensing unit with three phase compressor with adjustment rand from 10...40A and single/ three phase fans
--	---	---	--

TECHNICAL FEATURES

BOX SIZE	220*275*140 mm	370*275*175 mm	600*400*200 mm
BOX SIZE COMPLETE WITH DOOR LOCK	220*275*175 mm	370*275*175 mm	600*400*235 mm
WEIGHT	4Kg	6Kg	8Kg
BOX LEVEL OF PROTECTION	IP65	IP65	IP65
RELATIVE HUMIDITY OF THE ENVIRONMENT	<90% RH	<90% RH	<90% RH
STORAGE TEMPERATURE	-10÷+60°C	-10÷+60°C	-10÷+60°C
WORKING TEMPERATURE	-5÷+45°C	-5÷+45°C	-5÷+45°C
SUPPLY	400V AC ±10% 50-60Hz	400V AC ±10% 50-60Hz	400V AC ±10% 50-60Hz
COMPRESSOR PROTECTION	electric thermal relay	electric thermal relay	electric thermal relay
SIGNALING AND ALARM	Led	Led	Led
ISOLATION TRASFORMATION	/	Standard	Standard

INPUTS

DIFF. PRESSURE SWITCH OIL	/	Standard	Standard
PRESSURE SWITCH-HIGH/ LOW PRESSURE	Standard	Standard	Standard
KRIWAN	Standard	Standard	Standard
PRESS. PARTIALIZATION FANS	/	Standard	Standard
FUNCT. PUMP DOWN/ THERMOSTAT	Standard	Standard	Standard

\*Accessories: fixing brackets provided

All products have the possibility of customization with your own brand. Customization requires a minimum of lots to be established at the order stage.



PANEL CODE	UM16	UM25	UM40
------------	------	------	------

OUTPUT

COMPRESSOR	Three-phase adjustable range from 4...16A	Three-phase adjustable range from 6...25A	Three-phase adjustable range from 10...40A
CONDENSING FANS	Single phase 850W	2 single / three-phase 1200/2000W	3 single / three-phase 1200/2000W
SOLENOIDE FAN	Standard	Standard	Standard
CRANKCASE RESISTANCE		Standard	Standard
ALARM RELAY	Optional	Standard	Standard

OPTIONAL ACCESSORIES

ALARM RELAY	✓	Standard	Standard
-------------	---	----------	----------



UM16 \*



UM25 \*



UM40 \*

PANEL CODE	UM45	UM50	UM80
------------	------	------	------

DESCRIPTION	Electric panle for condensing unit with three-phase compressor with adjustable range from 12.5...50A and 3 fans single / three-phase.	Electric panle for condensing unit with three-phase compressor with adjustable range from 12...50A PWS starter and 3 fans single / three-phase.	Electric panle for condensing unit with three-phase compressor with adjustable range from 20...80A PWS starter and 3 fans single / three-phase.
-------------	---	---	---

TECHNICAL FEATURES

BOX SIZE	600*400*200 mm	600*400*200 mm	600*400*200 mm
BOX SIZE COMPLETE WITH DOOR LOCK	600*400*235 mm	600*400*235 mm	600*400*235 mm
WEIGHT	9Kg	10Kg	12Kg
BOX LEVEL OF PROTECTION	IP65	IP65	IP65
RELATIVE HUMIDITY OF THE ENVIRONMENT	<90% RH	<90% RH	<90% RH
STORAGE TEMPERATURE	-10÷+60°C	-10÷+60°C	-10÷+60°C
WORKING TEMPERATURE	-5÷+45°C	-5÷+45°C	-5÷+45°C
SUPPLY	400V AC ±10% 50-60Hz	400V AC ±10% 50-60Hz	400V AC ±10% 50-60Hz
COMPRESSOR PROTECTION	electric thermal relay	electric thermal relay	electric thermal relay
SIGNALING AND ALARM	Led	Led	Led
ISOLATION TRASFORMATION	Standard	Standard	Standard

INPUTS

DIFF. PRESSURE SWITCH OIL	Standard	Standard	Standard
PRESSURE SWITCH-HIGH/ LOW PRESSURE	Standard	Standard	Standard
KRIWAN	Standard	Standard	Standard
PRESS. PARTIALIZATION FANS	Standard	Standard	Standard
FUNCT. PUMP DOWN/ THERMOSTAT	Standard	Standard	Standard





PANEL CODE	UM45	UM50	UM80
OUTPUT			
COMPRESSOR	Three-phase adjustable range from 12.5...50A	Three-phase adjustable range from 12...50A	Three-phase adjustable range from 20...80A
CONDENSING FANS	3 mono/ three-phase 1200W/2000W	3 mono/ three-phase 1200W/2000W	3 mono/ three-phase 1200W/2000W
SOLENOIDE FAN	Standard	Standard	Standard
CARTER ELECTRICAL RESISTANCE	Standard	Standard	Standard
ALARM RELAY	Standard	Standard	Standard



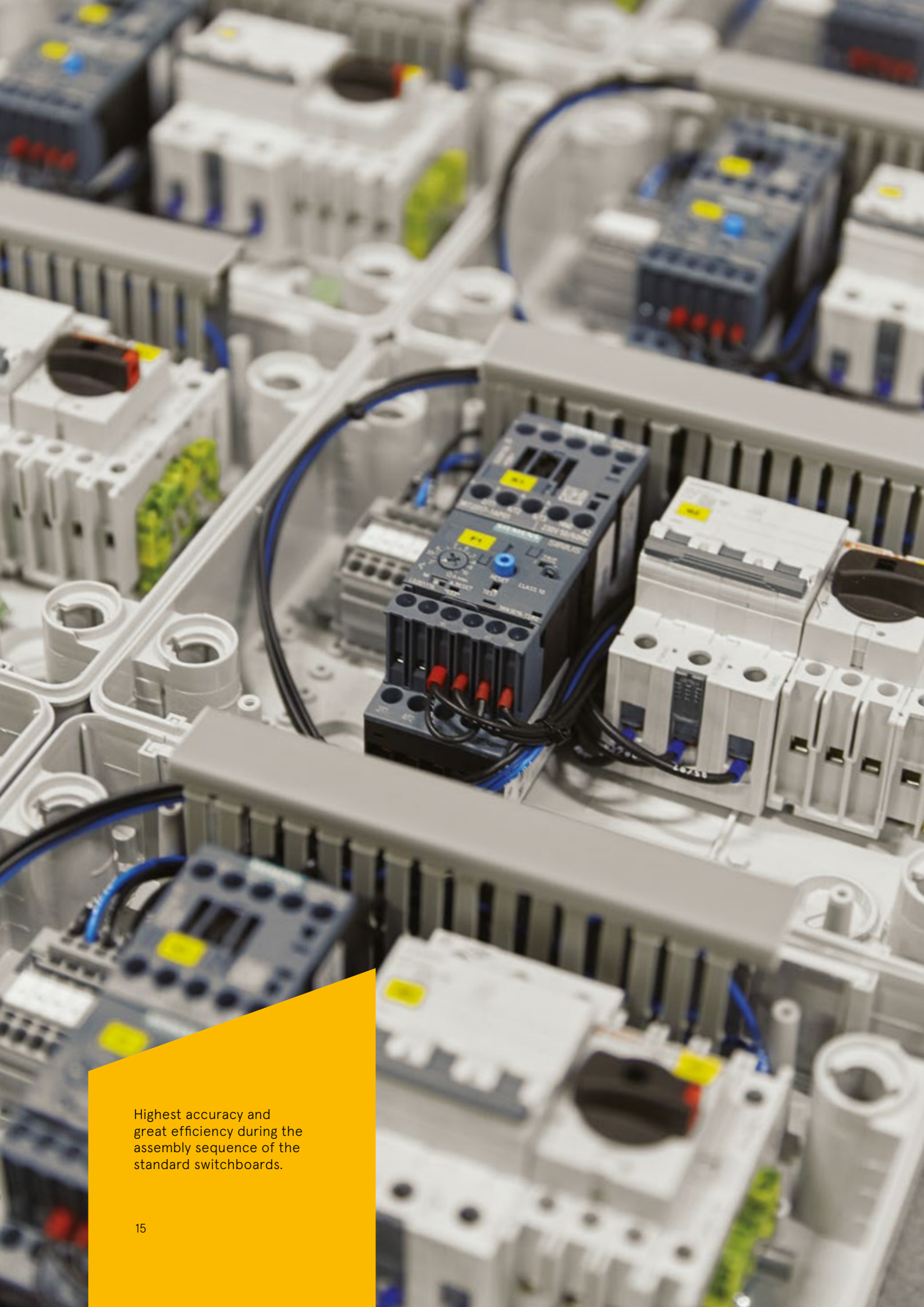
UM50 \*



UM50 \*



UM80 \*



Highest accuracy and great efficiency during the assembly sequence of the standard switchboards.

\* Accessories: fixing brackets provided

All products have the possibility of customization with your own brand. Customization requires a minimum of lots to be established at the order stage.



SERIES

# GFM

Dieci Electronic

Electric panel for single-phase cold room

## PANEL BOARD SERIES

The GFM SERIES electrical panels have been designed for the management and control of single-phase cold rooms. The GFM SERIES can also manage the double evaporator thanks to its controller. It is the ideal solution for those who want to combine highest operational efficiency and ease of use.

GFM \_ GFM MD \_ GFM SB

PANEL CODE	GFM	GFM MD	GFM SB
DESCRIPTION	Electrical panel for single-phase cold rooms.	Electrical panel for single-phase cold rooms with integrated 16A 0.03 differential magnetothermic switch.	Electrical panel for single-phase cold rooms with enhanced Three-phase defrosting.
TECHNICAL FEATURES			
ELECTRONIC	Dieci Electric	Dieci Electric	Dieci Electric
BOX SIZE	262*179*x95.6 mm	262*179*95,6 mm	262*179*95,6 mm
WEIGHT	1Kg	1Kg	1Kg
BOX LEVEL OF PROTECTION	IP65	IP65	IP65
RELATIVE HUMIDITY OF THE ENVIRONMENT	<90% RH	<90% RH	<90% RH
STORAGE TEMPERATURE	-10÷+60°C	-10÷+60°C	-10÷+60°C
WORKING TEMPERATURE	-5÷+45°C	-5÷+45°C	-5÷+45°C
SUPPLY	230V AC ±10% 50-60Hz	230V AC ±10% 50-60Hz	230V AC ±10% 50-60Hz
PROTECTION	/	Thermoswitch 16A 0,03	/
WARNING SIGNAL	Led+Display	Led+Display	Led+Display
DEFROSTING MANAGEMENT WITH CLOCK	RTC	RTC	RTC
INPUTS			
ROOM PROBE	NTC 10 Ohm 1%	NTC 10 Ohm 1%	NTC 10 Ohm 1%
EVAPORATOR PROBE 1	NTC 10 Ohm 1%	NTC 10 Ohm 1%	NTC 10 Ohm 1%
EVAPORATOR PROBE 2	NTC 10 Ohm 1%	NTC 10 Ohm 1%	/
CONFIGURABLE INPUT	Standard	Standard	Standard
MICRO DOOR	Standard	Standard	Standard





PANEL CODE	GFM	GFM MD	GFM SB
OUTPUT			
COMPRESSOR	Max 10A AC3	Max 10A AC3	Max 10A AC3
DEFROSTING 1	1500W AC1	1500W AC1	8000W (3*2600) AC1
DEFROSTING 2	1500W AC1	1500W AC1	
EVAPORATOR FANS	550W	550W	550W
ELECTRONIC SINGLE-POLE VALVE			
LIGHT CELL	850W AC1	850W AC1	850W AC1
ALARM RELAY	Standard	Standard	Standard

OPTIONAL ACCESSORIES			
RS485/WIFI**	✓	✓	✓



GFM \*



GFM MD \*



GFM SB \*

Basic panel of GF SERIES with high technical performance. The set-up includes a clock and the possibility of managing up to 2 evaporators and 6 relays. The RCD is available in the GFM MD SERIES.

\* Accessories: fixing brackets provided  
\*\* Communication card for in cloud supervision

All products have the possibility of customization with your own brand. Customization requires a minimum of lots to be established at the order stage.



SERIES

# GFM

DIECI ELECTRONIC

Electric panel for single-phase cold room

## PANEL BOARD SERIES WITH VALVE

The GFM SERIES electrical panels have been designed for the management and control of single-phase cold rooms with a 260mA single-pole electronic valve. It is the ideal solution for those who want to combine maximum operational efficiency and ease of use. The versatility of this SERIES is even more appreciable.

GFM ELECTRONIC \_ GFM MD ELECTRONIC \_ GFM SB ELECTRONIC

PANEL CODE	GFM ELECTRONIC	GFM MD ELECTRONIC	GFM SB ELECTRONIC
DESCRIPTION	Electrical panel for single-phase cold rooms with single-pole electronic valve.	Electrical panel for single-phase cold rooms with 16A 0.03 differential magnetothermic switch integrated with single-pole electronic valve.	Electrical panel for single-phase cold rooms with three-phase enhanced defrosting with single-pole electronic valve.
TECHNICAL FEATURES			
ELECTRONIC	Dieci Electric	Dieci Electric	Dieci Electric
BOX SIZE	262*179*95,6 mm	262*179*95,6 mm	262*179*95,6 mm
WEIGHT	1Kg	1Kg	1Kg
BOX LEVEL OF PROTECTION	IP65	IP65	IP65
RELATIVE HUMIDITY OF THE ENVIRONMENT	<90% RH	<90% RH	<90% RH
STORAGE TEMPERATURE	-10÷+60°C	-10÷+60°C	-10÷+60°C
WORKING TEMPERATURE	-5÷+45°C	-5÷+45°C	-5÷+45°C
SUPPLY	230V AC ±10% 50-60Hz	230V AC ±10% 50-60Hz	230V AC ±10% 50-60Hz
PROTECTION	Thermoswitch 16A 0.03		
WARNING SIGNAL	Led+Display	Led+Display	Led+Display
ISOLATING TRANSFORMER	RTC	RTC	RTC
INPUTS			
CELL PROBE	NTC 10 Ohm 1%	NTC 10 Ohm 1%	NTC 10 Ohm 1%
EVAPORATOR PROBE	NTC 10 Ohm 1%	NTC 10 Ohm 1%	NTC 10 Ohm 1%
SUCTION PROBE	NTC 10 Ohm 1%	NTC 10 Ohm 1%	NTC 10 Ohm 1%
PRESSURE PROBE	4-20mA	4-20mA	4-20mA
CONFIGURABLE INPUT	Standard	Standard	Standard
MICRO DOOR	Standard	Standard	Standard





PANEL CODE	GFM ELECTRONIC	GFM MD ELECTRONIC	GFM SB ELECTRONIC
OUTPUT			
COMPRESSOR	Max 10A AC3	Max 10A AC3	Max 10A AC3
DEFROSTING	1500W AC1	1500W AC1	8000W (3*2600) AC1
EVAPORATOR FANS	550W	550W	550W
ELECTRONIC SINGLE-POLE VALVE	Max 260mA distance 9m	Max 260mA distance 9m	Max 260mA distance 9m
LIGHT CELL	850W AC1	850W AC1	850W AC1
ALARM RELAY	Standard	Standard	Standard

OPTIONAL ACCESSORIES

RS485/WIFI**	✓	✓	✓
--------------	---	---	---



GFM ELECTRONIC \*



GFM MD ELECTRONIC \*



GFM SB ELECTRONIC \*



GF SERIES electrical panel, designed to offer great compactness, ease of installation, accessibility and use.

\* **Accessories:** fixing brackets provided  
\*\* **Communication card** for in cloud supervision

All products have the possibility of customization with your own brand.  
Customization requires a minimum of lots to be established at the order stage.



SERIES

# GF

DIECI ELECTRONIC

Electrical panels for three-phase cold rooms

COMPLETE  
PANEL BOARD SERIES

The GF SERIES electrical panels have been designed for the management and control of complete Three-phase cold rooms. It is the ideal solution for those who want to combine maximum operational efficiency and ease of use. The versatility of this SERIES is even more appreciable. In fact, the customer will be able to request the electronic that best suits their needs by choosing from different brands of leading companies in the sector. Maximum efficiency and versatility of assembly to guarantee an excellent relationship between costs and benefits. The use of electronic thermals and magnetothermic protections makes it possible to manage multiple applications with very few codes.

GF4 \_ GF12 \_ GF16 \_ GF25 \_ GF40 \_ GF50

PANEL CODE	GF4	GF12	GF16
------------	-----	------	------

DESCRIPTION	Electric panel for three-phase cold rooms complete with compressor with adjustable range with electronic thermal from 1... 4A.	Electric panel for three-phase cold rooms complete with compressor with adjustable range with electronic thermal from 3... 12A.	Electric panel for three-phase cold rooms complete with compressor with adjustable range with electronic thermal from 4... 16A.
-------------	--	---	---

TECHNICAL FEATURES			
ELECTRONIC	Dieci Electric	Dieci Electric	Dieci Electric
BOX SIZE	370*275*175 mm	370*275*175 mm	370*275*175 mm
BOX SIZE COMPLETE WITH DOOR LOCK	370*275*175 mm	370*275*175 mm	370*275*175 mm
WEIGHT	5Kg	5Kg	5Kg
BOX LEVEL OF PROTECTION	IP65	IP65	IP65
RELATIVE HUMIDITY OF THE ENVIRONMENT	<90% RH	<90% RH	<90% RH
STORAGE TEMPERATURE	-10÷+60°C	-10÷+60°C	-10÷+60°C
WORKING TEMPERATURE	-5÷+45°C	-5÷+45°C	-5÷+45°C
SUPPLY	400V AC ±10% 50-60Hz	400V AC ±10% 50-60Hz	400V AC ±10% 50-60Hz
COMPRESSOR PROTECTION	Electric thermal relay	Electric thermal relay	Electric thermal relay
GENERAL PROTECTION	Standard Thermoswitch	Standard Thermoswitch	Standard Thermoswitch
SIGNALING AND ALARM	Led+Display	Led+Display	Led+Display
DEFROSTING MANAGEMENT WITH CLOCK	RTC	RTC	RTC

INPUTS			
CELL PROBE	NTC 10 Ohm 1%	NTC 10 Ohm 1%	NTC 10 Ohm 1%
EVAPORATOR PROBE	NTC 10 Ohm 1%	NTC 10 Ohm 1%	NTC 10 Ohm 1%
KWIWAN INPUT	Standard	Standard	Standard
HIGH/LOW GENERAL PRESSURE SWITCH INPUT	Standard	Standard	Standard
MICRO DOOR	Standard	Standard	Standard



PANEL CODE	GF4	GF12	GF16
OUTPUT			
COMPRESSOR	Three-phase adjustable range from 1...4A	Three-phase adjustable range from 3...12A	Three-phase adjustable range from 4...16A
CONDENSING FANS	850W single-phase	850W single-phase	850W single-phase
ELECTRIC DEFROSTING	10500W three-phase	10500W three-phase	13000W three-phase
EVAPORATOR FANS	850W single-phase	850W single-phase	850W single-phase
SOLENOIDE FAN	Standard	Standard	Standard
OIL COMPRESSOR RESISTANCEE	Standard	Standard	Standard
LIGHT CELL	850W single-phase	850W single-phase	850W single-phase
ALARM RELAY	Standard	Standard	Standard

OPTIONAL ACCESSORIES

RS485/WIFI**	✓	✓	✓
--------------	---	---	---



GF4 \*



GF12 \*



GF16 \*

PANEL CODE	GF25	GF40	GF50
DESCRIPTION			
	Electric panel for three-phase cold rooms complete with compressor with adjustable range with electronic thermal from 6... 25A.	Electric panel for three-phase cold rooms complete with compressor with adjustable range with electronic thermal from 10... 40A.	Electric panel for three-phase cold rooms complete with compressor with adjustable range with electronic thermal from 12.5... 50A.
TECHNICAL FEATURES			
ELECTRONIC	Dieci Electric	Dieci Electric	Dieci Electric
BOX SIZE	600*400*200 mm	600*400*200 mm	600*400*200 mm
BOX SIZE COMPLETE WITH DOOR LOCK	600*400*235 mm	600*400*235 mm	600*400*235 mm
WEIGHT	13kg	23kg	26kg
BOX LEVEL OF PROTECTION	IP65	IP65	IP65
RELATIVE HUMIDITY OF THE ENVIRONMENT	<90% RH	<90% RH	<90% RH
STORAGE TEMPERATURE	-10÷+60°C	-10÷+60°C	-10÷+60°C
WORKING TEMPERATURE	-5÷+45°C	-5÷+45°C	-5÷+45°C
SUPPLY	400V AC ±10% 50-60Hz	400V AC ±10% 50-60Hz	400V AC ±10% 50-60Hz
COMPRESSOR PROTECTION	Electric thermal relay	Electric thermal relay	Electric thermal relay
GENERAL PROTECTION	Standard Thermoswitch	Standard Thermoswitch	Standard Thermoswitch
SIGNALING AND ALARM	Led+Display	Led+Display	Led+Display
DEFROSTING MANAGEMENT WITH CLOCK	RTC	RTC	RTC

INPUTS

CELL PROBE	NTC 10 Ohm 1%	NTC 10 Ohm 1%	NTC 10 Ohm 1%
EVAPORATOR PROBE	NTC 10 Ohm 1%	NTC 10 Ohm 1%	NTC 10 Ohm 1%
KWIWAN INPUT	Standard	Standard	Standard
HIGH/LOW GENERAL PRESSURE SWITCH INPUT	Standard	Standard	Standard
OIL DIFFERENTIAL PRESSURE SWITCH INPUT	Standard	Standard	Standard

\* **Accessories:** fixing brackets provided  
\*\* **Communication card for in cloud supervision**

All products have the possibility of customization with your own brand.  
Customization requires a minimum of lots to be established at the order stage.



PANEL CODE	GF25	GF40	GF50
------------	------	------	------

OUTPUT			
COMPRESSOR	Three-phase adjustable range from 6...25A	Three-phase adjustable range from 10...40A	Three-phase adjustable range from 12,5...50A
CONDENSING FANS	2 from 1200W single-phase 1 from 2000W three-phase	2 from 1200W single-phase 1 from 2000W three-phase	2 from 1200W single-phase 1 from 2000W three-phase
ELECTRIC DEFROSTING	18000W three-phase	22000W three-phase	33000W three-phase
EVAPORATOR FANS	1 from 1200W single-phase 1 from 2000W three-phase	3 from 1200W single-phase 1 from 2000W three-phase	3 from 1200W single-phase 1 from 2000W three-phase
SOLENOIDE FAN	Standard	Standard	Standard
OIL COMPRESSOR RESISTANCEE	Standard	Standard	Standard
LIGHT CELL	Standard (Voltage free contact)	Standard (Voltage free contact)	Standard (Voltage free contact)
ALARM RELAY	Standard	Standard	Standard

OPTIONAL ACCESSORIES			
RS485/WIFI**	✓	✓	✓



\* Accessories: fixing brackets provided  
\*\* Communication card for in cloud supervision

All products have the possibility of customization with your own brand.  
Customization requires a minimum of lots to be established at the order stage.



The large, modernly designed display installed on the control board offers a bright control layout and a simple graphical interface that facilitates the use of the device.





# SERIES GF DIECI ELECTRONIC

Electrical panels for three-phase cold rooms

## COMPLETE PANEL BOARD SERIES WITH ELECTRONIC VALVES

The electrical panels of the SERIES GF-Electronic have been designed for the management and control of three-phase cold rooms complete with single-pole electronic valve up to 260mA.

It is the ideal solution for those who want to combine maximum operational efficiency and ease of use. The use of electronic thermals and magnetothermic protections makes it possible to manage multiple applications with very few codes.

GF4 ELECTRONIC \_ GF12 ELECTRONIC \_ GF16 ELECTRONIC

PANEL CODE	GF4 ELECTRONIC	GF12 ELECTRONIC	GF16 ELECTRONIC
DESCRIPTION	Electric panel for cold rooms Three-phase complete with compressor with adjustable range with electronic thermal from 1... 4A with single-pole electronic valve.	Electric panel for cold rooms Three-phase complete with compressor with adjustable range with electronic thermal from 3... 12A with single-pole electronic valve.	Electric panel for cold rooms Three-phase complete with compressor with adjustable range with electronic thermal from 4... 16A with single-pole electronic valve.
TECHNICAL FEATURES			
ELECTRONIC	Dieci Electric	Dieci Electric	Dieci Electric
BOX SIZE	370*275*175 mm	370*275*175 mm	370*275*175 mm
BOX SIZE COMPLETE WITH DOOR LOCK	370*275*175 mm	370*275*175 mm	370*275*175 mm
WEIGHT	5Kg	5Kg	5Kg
BOX LEVEL OF PROTECTION	IP65	IP65	IP65
RELATIVE HUMIDITY OF THE ENVIRONMENT	<90% RH	<90% RH	<90% RH
STORAGE TEMPERATURE	-10÷+60°C	-10÷+60°C	-10÷+60°C
WORKING TEMPERATURE	-5÷+45°C	-5÷+45°C	-5÷+45°C
SUPPLY	400V AC ±10% 50-60Hz	400V AC ±10% 50-60Hz	400V AC ±10% 50-60Hz
COMPRESSOR PROTECTION	Electric thermal relay	Electric thermal relay	Electric thermal relay
GENERAL PROTECTION	Standard Thermoswitch	Standard Thermoswitch	Standard Thermoswitch
SIGNALING AND ALARM	Led+Display	Led+Display	Led+Display
DEFROSTING MANAGEMENT WITH CLOCK	RTC	RTC	RTC
INPUTS			
CELL PROBE	NTC 10 Ohm 1%	NTC 10 Ohm 1%	NTC 10 Ohm 1%
EVAPORATOR PROBE	NTC 10 Ohm 1%	NTC 10 Ohm 1%	NTC 10 Ohm 1%
SUCTION PROBE	NTC 10 Ohm 1%	NTC 10 Ohm 1%	NTC 10 Ohm 1%
PRESSURE PROBE	4-20mA	4-20mA	4-20mA
KWIWAN INPUT	Standard	Standard	Standard
HIGH/LOW GENERAL PRESSURE SWITCH INPUT	Standard	Standard	Standard
MICRO DOOR	Standard	Standard	Standard



PANEL CODE	GF4 ELECTRONIC	GF12 ELECTRONIC	GF16 ELECTRONIC
OUTPUT			
COMPRESSOR	Three-phase adjustable range from 1...4A	Three-phase adjustable range from 3...12A	Three-phase adjustable range from 4...16A
CONDENSING FANS	850W single-phase	850W single-phase	850W single-phase
ELECTRIC DEFROSTING	10500W three-phase	10500W three-phase	13000W three-phase
EVAPORATOR FANS	850W single-phase	850W single-phase	850W single-phase
SOLENOIDE FAN	Standard	Standard	Standard
ELECTRONIC SINGLE-POLE VALVE	Max 260mA distance 9m	Max 260mA distance 9m	Max 260mA distance 9m
OIL COMPRESSOR RESISTANCE	Standard	Standard	Standard
LIGHT CELL	850W single-phase	850W single-phase	850W single-phase
ALARM RELAY	Standard	Standard	Standard

OPTIONAL ACCESSORIES			
RS485/WIFI**	✓	✓	✓



GF4 ELECTRONIC \*



GF12 ELECTRONIC \*



GF16 ELECTRONIC \*



Entry level power panel  
GF SERIES assembled using  
high-end components.  
Designed to offer a solution  
capable of combining  
operational efficiency with  
low costs.

\* Accessories: fixing brackets provided  
\*\* Communication card for in cloud supervision

All products have the possibility of customization with your own brand.  
Customization requires a minimum of lots to be established at the order stage.



SERIES

# GF D

Electronic Dixell

Electrical panels for three-phase cold rooms

COMPLETE  
PANEL BOARD SERIES

The SERIES GF electrical panels have been designed for the management and control of complete Three-phase cold rooms. It is the ideal solution for those who want to combine maximum operational efficiency and ease of use. The versatility of this SERIES is even more appreciable. In fact, the customer will be able to request the electronic that best suits their needs by choosing from different brands of leading companies in the sector. Maximum efficiency and versatility of assembly to guarantee an excellent relationship between costs and benefits. The use of electronic thermals and magnetothermic protections makes it possible to manage multiple applications with very few codes.

GF4 D \_ GF12 D \_ GF16 D \_ GF25 D \_ GF40 D \_ GF50 D

PANEL CODE	GF4 D	GF12 D	GF16 D
DESCRIPTION	Electric panel for three-phase cold rooms complete with compressor with adjustable range with electronic thermal from 1... 4A.	Electric panel for three-phase cold rooms complete with compressor with adjustable range with electronic thermal from 3... 12A.	Electric panel for three-phase cold rooms complete with compressor with adjustable range with electronic thermal from 4... 16A.
TECHNICAL FEATURES			
ELECTRONIC	Dixell	Dixell	Dixell
BOX SIZE	370*275*175 mm	370*275*175 mm	370*275*175 mm
BOX SIZE COMPLETE WITH DOOR LOCK	370*275*175 mm	370*275*175 mm	370*275*175 mm
WEIGHT	5Kg	5Kg	5Kg
BOX LEVEL OF PROTECTION	IP65	IP65	IP65
RELATIVE HUMIDITY OF THE ENVIRONMENT	<90% RH	<90% RH	<90% RH
STORAGE TEMPERATURE	-10÷+60°C	-10÷+60°C	-10÷+60°C
WORKING TEMPERATURE	-5÷+45°C	-5÷+45°C	-5÷+45°C
SUPPLY	400V AC ±10% 50-60Hz	400V AC ±10% 50-60Hz	400V AC ±10% 50-60Hz
COMPRESSOR PROTECTION	Thermal overload relay	Thermal overload relay	Thermal overload relay
GENERAL PROTECTION	Standard Thermoswitch	Standard Thermoswitch	Standard Thermoswitch
SIGNALING AND ALARM	Led+Display	Led+Display	Led+Display
INPUTS			
CELL PROBE	NTC 10 Ohm 1%	NTC 10 Ohm 1%	NTC 10 Ohm 1%
EVAPORATOR PROBE	NTC 10 Ohm 1%	NTC 10 Ohm 1%	NTC 10 Ohm 1%
KWIWAN INPUT	Standard	Standard	Standard
HIGH/LOW GENERAL PRESSURE SWITCH INPUT	Standard	Standard	Standard
MICRO DOOR	Standard	Standard	Standard



PANEL CODE	GF4 D	GF12 D	GF16 D
------------	-------	--------	--------

OUTPUT

COMPRESSOR	Three-phase adjustable range from 1...4A	Three-phase adjustable range from 3...12A	Three-phase adjustable range from 4...16A
CONDENSING FANS	850W single-phase	850W single-phase	850W single-phase
ELECTRIC DEFROSTING	10500W three-phase	10500W three-phase	13000W three-phase
EVAPORATOR FANS	850W single-phase	850W single-phase	850W single-phase
SOLENOIDE FAN	Standard	Standard	Standard
OIL COMPRESSOR RESISTANCEE	Standard	Standard	Standard
LIGHT CELL	850W single-phase	850W single-phase	850W single-phase

OPTIONAL ACCESSORIES

RS485**	✓	✓	✓
---------	---	---	---



GF4 D \*



GF12 D \*



GF16 D \*

PANEL CODE	GF25 D	GF40 D	GF50 D
------------	--------	--------	--------

DESCRIPTION

Electric panel for three-phase cold rooms complete with compressor with adjustable range with electronic thermal from 6... 25A.	Electric panel for three-phase cold rooms complete with compressor with adjustable range with electronic thermal from 10... 40A.	Electric panel for three-phase cold rooms complete with compressor with adjustable range with electronic thermal from 12.5... 50A.
---	--	--

TECHNICAL FEATURES

ELECTRONIC	Dixell	Dixell	Dixell
BOX SIZE	600*400*200 mm	600*400*200 mm	600*400*200 mm
BOX SIZE COMPLETE WITH DOOR LOCK	600*400*235 mm	600*400*235 mm	600*400*235 mm
WEIGHT	13Kg	23Kg	26Kg
BOX LEVEL OF PROTECTION	IP65	IP65	IP65
RELATIVE HUMIDITY OF THE ENVIRONMENT	<90% RH	<90% RH	<90% RH
STORAGE TEMPERATURE	-10÷+60°C	-10÷+60°C	-10÷+60°C
WORKING TEMPERATURE	-5÷+45°C	-5÷+45°C	-5÷+45°C
SUPPLY	400V AC ±10% 50-60Hz	400V AC ±10% 50-60Hz	400V AC ±10% 50-60Hz
COMPRESSOR PROTECTION	Electric thermal relay	Electric thermal relay	Electric thermal relay
GENERAL PROTECTION	Standard Thermoswitch	Standard Thermoswitch	Standard Thermoswitch
SIGNALING AND ALARM	Led+Display	Led+Display	Led+Display

INPUTS

CELL PROBE	NTC 10 Ohm 1%	NTC 10 Ohm 1%	NTC 10 Ohm 1%
EVAPORATOR PROBE	NTC 10 Ohm 1%	NTC 10 Ohm 1%	NTC 10 Ohm 1%
KWIWAN INPUT	Standard	Standard	Standard
HIGH/LOW GENERAL PRESSURE SWITCH INPUT	Standard	Standard	Standard
OIL DIFFERENTIAL PRESSURE SWITCH INPUT	Standard	Standard	Standard
MICRO DOOR	Standard	Standard	Standard

\* Accessories: fixing brackets provided  
\*\* Communication card for supervision

All products have the possibility of customization with your own brand.  
Customization requires a minimum of lots to be established at the order stage.





PANEL CODE	GF25 D	GF40 D	GF50 D
------------	--------	--------	--------

OUTPUT			
COMPRESSOR	Three-phase adjustable range from 6...25A	Three-phase adjustable range from 10...40A	Three-phase adjustable range from 12,5...50A
CONDENSING FANS	2 from 1200W single-phase 1 from 2000W three-phase	2 from 1200W single-phase 1 from 2000W three-phase	2 from 1200W single-phase 1 from 2000W three-phase
ELECTRIC DEFROSTING	18000W three-phase	22000W three-phase	33000W three-phase
EVAPORATOR FANS	1 from 1200W single-phase 1 from 2000W three-phase	3 from 1200W single-phase 1 from 2000W three-phase	3 from 1200W single-phase 1 from 2000W three-phase
SOLENOIDE FAN	Standard	Standard	Standard
OIL COMPRESSOR RESISTANCE	Standard	Standard	Standard
LIGHT CELL	Standard (Voltage free contact)	Standard (Voltage free contact)	Standard (Voltage free contact)

OPTIONAL ACCESSORIES

RS485**	✓	✓	✓
---------	---	---	---



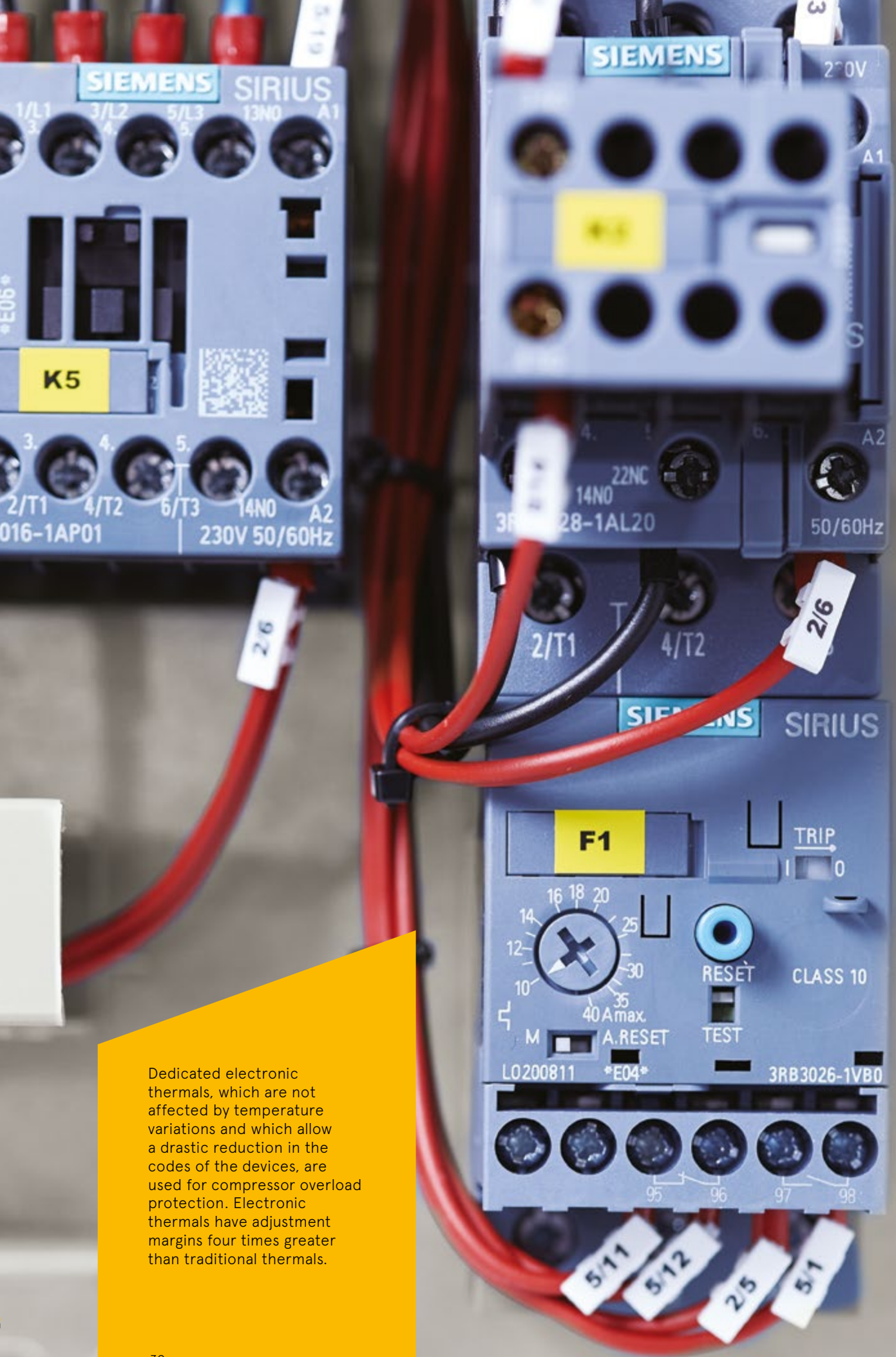
GF25 D \*



GF40 D \*



GF50 D \*



Dedicated electronic thermals, which are not affected by temperature variations and which allow a drastic reduction in the codes of the devices, are used for compressor overload protection. Electronic thermals have adjustment margins four times greater than traditional thermals.

\* Accessories: fixing brackets provided  
\*\* Communication card for supervision

All products have the possibility of customization with your own brand.  
Customization requires a minimum of lots to be established at the order stage.



SERIES

# GF C

Electronic Carel

Electrical panels for three-phase cold rooms

COMPLETE  
PANEL BOARD SERIES

The SERIES GF electrical panels have been designed for the management and control of complete Three-phase cold rooms. It is the ideal solution for those who want to combine maximum operational efficiency and ease of use. The versatility of this SERIES is even more appreciable. In fact, the customer will be able to request the electronic that best suits their needs by choosing from different brands of leading companies in the sector. Maximum efficiency and versatility of assembly to guarantee an excellent relationship between costs and benefits. The use of electronic thermals and magnetothermic protections makes it possible to manage multiple applications with very few codes.

GF4 C \_ GF12 C \_ GF16 C \_ GF25 C \_ GF40 C \_ GF50 C

ELECTRONIC CAREL		ELECTRICAL PANELS FOR THREE-PHASE REFRIGERATORS		COMPLETE PANEL BOARD SERIES	
PANEL CODE		GF4 C	GF12 C	GF16 C	
DESCRIPTION		Electric panel for three-phase cold rooms complete with compressor with adjustable range with electronic thermal from 1... 4A.	Electric panel for three-phase cold rooms complete with compressor with adjustable range with electronic thermal from 3... 12A.	Electric panel for three-phase cold rooms complete with compressor with adjustable range with electronic thermal from 4... 16A.	
TECHNICAL FEATURES					
ELECTRONIC	Carel	Carel	Carel	Carel	
BOX SIZE	370*275*175 mm	370*275*175 mm	370*275*175 mm	370*275*175 mm	
BOX SIZE COMPLETE WITH DOOR LOCK	370*275*175 mm	370*275*175 mm	370*275*175 mm	370*275*175 mm	
WEIGHT	5Kg	5Kg	5Kg	5Kg	
BOX LEVEL OF PROTECTION	IP65	IP65	IP65	IP65	
RELATIVE HUMIDITY OF THE ENVIRONMENT	<90% RH	<90% RH	<90% RH	<90% RH	
STORAGE TEMPERATURE	-10÷+60°C	-10÷+60°C	-10÷+60°C	-10÷+60°C	
WORKING TEMPERATURE	-5÷+45°C	-5÷+45°C	-5÷+45°C	-5÷+45°C	
SUPPLY	400V AC ±10% 50-60Hz	400V AC ±10% 50-60Hz	400V AC ±10% 50-60Hz	400V AC ±10% 50-60Hz	
COMPRESSOR PROTECTION	Electric thermal relay	Electric thermal relay	Electric thermal relay	Electric thermal relay	
GENERAL PROTECTION	Standard Thermoswitch	Standard Thermoswitch	Standard Thermoswitch	Standard Thermoswitch	
SIGNALING AND ALARM	Led+Display	Led+Display	Led+Display	Led+Display	
INPUTS					
CELL PROBE	NTC 10 Ohm 1%	NTC 10 Ohm 1%	NTC 10 Ohm 1%	NTC 10 Ohm 1%	
EVAPORATOR PROBE	NTC 10 Ohm 1%	NTC 10 Ohm 1%	NTC 10 Ohm 1%	NTC 10 Ohm 1%	
KWIWAN INPUT	Standard	Standard	Standard	Standard	
HIGH/LOW GENERAL PRESSURE SWITCH INPUT	Standard	Standard	Standard	Standard	
MICRO DOOR	Standard	Standard	Standard	Standard	



PANEL CODE	GF4 C	GF12 C	GF16 C
------------	-------	--------	--------

OUTPUT

COMPRESSOR	Three-phase adjustable range from 1...4A	Three-phase adjustable range from 3...12A	Three-phase adjustable range from 4...16A
CONDENSING FANS	850W single-phase	850W single-phase	850W single-phase
ELECTRIC DEFROSTING	10500W three-phase	10500W three-phase	10500W three-phase
EVAPORATOR FANS	850W single-phase	850W single-phase	850W single-phase
SOLENOIDE FAN	Standard	Standard	Standard
OIL COMPRESSOR RESISTANCE	Standard	Standard	Standard
LIGHT CELL	850W single-phase	850W single-phase	850W single-phase

OPTIONAL ACCESSORIES

RS485**	✓	✓	✓
---------	---	---	---



GF4 C \*



GF12 C \*



GF16 C \*

PANEL CODE	GF25 C	GF40 C	GF50 C
------------	--------	--------	--------

DESCRIPTION

Electric panel for three-phase cold rooms complete with compressor with adjustable range with electronic thermal from 6... 25A.	Electric panel for three-phase cold rooms complete with compressor with adjustable range with electronic thermal from 10... 40A.	Electric panel for three-phase cold rooms complete with compressor with adjustable range with electronic thermal from 12.5... 50A.
---	--	--

TECHNICAL FEATURES

ELECTRONIC	Carel	Carel	Carel
BOX SIZE	600*400*200 mm	600*400*200 mm	600*400*200 mm
BOX SIZE COMPLETE WITH DOOR LOCK	600*400*235 mm	600*400*235 mm	600*400*235 mm
WEIGHT	13Kg	23Kg	26Kg
BOX LEVEL OF PROTECTION	IP65	IP65	IP65
RELATIVE HUMIDITY OF THE ENVIRONMENT	<90% RH	<90% RH	<90% RH
STORAGE TEMPERATURE	-10÷+60°C	-10÷+60°C	-10÷+60°C
WORKING TEMPERATURE	-5÷+45°C	-5÷+45°C	-5÷+45°C
SUPPLY	400V AC ±10% 50-60Hz	400V AC ±10% 50-60Hz	400V AC ±10% 50-60Hz

COMPRESSOR PROTECTION	Electric thermal relay	Electric thermal relay	Electric thermal relay
GENERAL PROTECTION	Standard Thermoswitch	Standard Thermoswitch	Standard Thermoswitch
SIGNALING AND ALARM	Led+Display	Led+Display	Led+Display

INPUTS

CELL PROBE	NTC 10 Ohm 1%	NTC 10 Ohm 1%	NTC 10 Ohm 1%
EVAPORATOR PROBE	NTC 10 Ohm 1%	NTC 10 Ohm 1%	NTC 10 Ohm 1%
KWIWAN INPUT	Standard	Standard	Standard
HIGH/LOW GENERAL PRESSURE SWITCH INPUT	Standard	Standard	Standard
OIL DIFFERENTIAL PRESSURE SWITCH INPUT	Standard	Standard	Standard
MICRO DOOR	Standard	Standard	Standard

\* Accessories: fixing brackets provided  
\*\* Communication card for supervision

All products have the possibility of customization with your own brand.  
Customization requires a minimum of lots to be established at the order stage.





PANEL CODE	GF25 C	GF40 C	GF50 C
------------	--------	--------	--------

OUTPUT			
COMPRESSOR	Three-phase adjustable range from 6...25A	Three-phase adjustable range from 10...40A	Three-phase adjustable range from 12,5...50A
CONDENSING FANS	2 from 1200W single-phase 1 from 2000W three-phase	2 from 1200W single-phase 1 from 2000W three-phase	2 from 1200W single-phase 1 from 2000W three-phase
ELECTRIC DEFROSTING	18000W three-phase	22000W three-phase	33000W three-phase
EVAPORATOR FANS	1 from 1200W single-phase 1 from 2000W three-phase	3 from 1200W single-phase 1 from 2000W three-phase	3 from 1200W single-phase 1 from 2000W three-phase
SOLENOIDE FAN	Standard	Standard	Standard
OIL COMPRESSOR RESISTANCE	Standard	Standard	Standard
LIGHT CELL	Standard (Voltage free contact)	Standard (Voltage free contact)	Standard (Voltage free contact)

OPTIONAL ACCESSORIES

RS485**	✓	✓	✓
---------	---	---	---



GF25 C \*



GF40 C \*



GF50 C \*



To protect the system, to ensure greater safety and ease of restoration in the event of an intervention, we install top-of-the-range thermoswitch to replace obsolete fuses.

\* Accessories: fixing brackets provided  
\*\* Communication card for supervision

All products have the possibility of customization with your own brand.  
Customization requires a minimum of lots to be established at the order stage.





SERIES

# GF E

Electronic Eliwell

Electrical panels for three-phase cold rooms

## COMPLETE PANEL BOARD SERIES

The SERIES GF electrical panels have been designed for the management and control of complete Three-phase cold rooms. It is the ideal solution for those who want to combine maximum operational efficiency and ease of use. The versatility of this SERIES is even more appreciable. In fact, the customer will be able to request the electronic that best suits their needs by choosing from different brands of leading companies in the sector. Maximum efficiency and versatility of assembly to guarantee an excellent relationship between costs and benefits. The use of electronic thermals and magnetothermic protections makes it possible to manage multiple applications with very few codes.

GF4 E \_ GF12 E \_ GF16 E \_ GF25 E \_ GF40 E \_ GF50 E

ELECTRONIC ELIWELL

ELECTRICAL PANELS FOR THREE-PHASE REFRIGERATORS

COMPLETE PANEL BOARD SERIES

PANEL CODE	GF4 E	GF12 E	GF16 E
------------	-------	--------	--------

DESCRIPTION	Electric panel for three-phase cold rooms complete with compressor with adjustable range with electronic thermal from 1... 4A.	Electric panel for three-phase cold rooms complete with compressor with adjustable range with electronic thermal from 3... 12A.	Electric panel for three-phase cold rooms complete with compressor with adjustable range with electronic thermal from 4... 16A.
-------------	--	---	---

TECHNICAL FEATURES			
ELECTRONIC	Eliwell	Eliwell	Eliwell
BOX SIZE	370*275*175 mm	370*275*175 mm	370*275*175 mm
BOX SIZE COMPLETE WITH DOOR LOCK	370*275*175 mm	370*275*175 mm	370*275*175 mm
WEIGHT	5Kg	5Kg	5Kg
BOX LEVEL OF PROTECTION	IP65	IP65	IP65
RELATIVE HUMIDITY OF THE ENVIRONMENT	<90% RH	<90% RH	<90% RH
STORAGE TEMPERATURE	-10÷+60°C	-10÷+60°C	-10÷+60°C
WORKING TEMPERATURE	-5÷+45°C	-5÷+45°C	-5÷+45°C
SUPPLY	400V AC ±10% 50-60Hz	400V AC ±10% 50-60Hz	400V AC ±10% 50-60Hz
COMPRESSOR PROTECTION	Electric thermal relay	Electric thermal relay	Electric thermal relay
GENERAL PROTECTION	Standard Thermoswitch	Standard Thermoswitch	Standard Thermoswitch
SIGNALING AND ALARM	Led+Display	Led+Display	Led+Display

INPUTS			
CELL PROBE	NTC 10 Ohm 1%	NTC 10 Ohm 1%	NTC 10 Ohm 1%
EVAPORATOR PROBE	NTC 10 Ohm 1%	NTC 10 Ohm 1%	NTC 10 Ohm 1%
KWIWAN INPUT	Standard	Standard	Standard
HIGH/LOW GENERAL PRESSURE SWITCH INPUT	Standard	Standard	Standard
MICRO DOOR	Standard	Standard	Standard



PANEL CODE	GF4 E	GF12 E	GF16 E
------------	-------	--------	--------

OUTPUT

COMPRESSOR	Three-phase adjustable range from 1...4A	Three-phase adjustable range from 3...12A	Three-phase adjustable range from 4...16A
CONDENSING FANS	850W single-phase	850W single-phase	850W single-phase
ELECTRIC DEFROSTING	10500W Three-phase	10500W Three-phase	13000W Three-phase
EVAPORATOR FANS	850W single-phase	850W single-phase	850W single-phase
SOLENOIDE FAN	Standard	Standard	Standard
OIL COMPRESSOR RESISTANCE	Standard	Standard	Standard
LIGHT CELL	850W single-phase	850W single-phase	Standard (Voltage free contact)

OPTIONAL ACCESSORIES

RS485**	✓	✓	✓
---------	---	---	---



GF4 E \*



GF12 E \*



GF16 E \*

PANEL CODE	GF25 E	GF40 E	GF50 E
------------	--------	--------	--------

DESCRIPTION

Electric panel for three-phase cold rooms complete with compressor with adjustable range with electronic thermal from 6... 25A.	Electric panel for three-phase cold rooms complete with compressor with adjustable range with electronic thermal from 10... 40A.	Electric panel for three-phase cold rooms complete with compressor with adjustable range with electronic thermal from 12.5... 50A.
---	--	--

TECHNICAL FEATURES

Electronic	Eliwell	Eliwell	Eliwell
BOX SIZE	600*400*200 mm	600*400*200 mm	600*400*200 mm
BOX SIZE COMPLETE WITH DOOR LOCK	600*400*235 mm	600*400*235 mm	600*400*235 mm
WEIGHT	13Kg	23Kg	26Kg
BOX LEVEL OF PROTECTION	IP65	IP65	IP65
RELATIVE HUMIDITY OF THE ENVIRONMENT	<90% RH	<90% RH	<90% RH
STORAGE TEMPERATURE	-10÷+60°C	-10÷+60°C	-10÷+60°C
WORKING TEMPERATURE	-5÷+45°C	-5÷+45°C	-5÷+45°C
SUPPLY	400V AC ±10% 50-60Hz	400V AC ±10% 50-60Hz	400V AC ±10% 50-60Hz
COMPRESSOR PROTECTION	Electric thermal relay	Electric thermal relay	Electric thermal relay
GENERAL PROTECTION	Standard thermoswitch	Standard thermoswitch	Standard thermoswitch
SIGNALING AND ALARM	Led+Display	Led+Display	Led+Display

INPUTS

CELL PROBE	NTC 10 Ohm 1%	NTC 10 Ohm 1%	NTC 10 Ohm 1%
EVAPORATOR PROBE	NTC 10 Ohm 1%	NTC 10 Ohm 1%	NTC 10 Ohm 1%
KIWIAN INPUT	Standard	Standard	Standard
HIGH/LOW GENERAL PRESSURE SWITCH INPUT	Standard	Standard	Standard
OIL DIFFERENTIAL PRESSURE SWITCH INPUT	/	Standard	Standard
MICRO DOOR	Standard	Standard	Standard

\* Accessories: fixing brackets provided  
\*\* Communication card for supervision

All products have the possibility of customization with your own brand.  
Customization requires a minimum of lots to be established at the order stage.



PANEL CODE	GF25 E	GF40 E	GF50 E
------------	--------	--------	--------

OUTPUT

COMPRESSOR	Three-phase adjustable range from 6...25A	Three-phase adjustable range from 10...40A	Three-phase adjustable range from 12,5...50A
CONDENSING FANS	2 from 1200W single-phase 1 from 2000W three-phase	2 from 1200W single-phase 1 from 2000W three-phase	2 from 1200W single-phase 1 from 2000W three-phase
ELECTRIC DEFROSTING	18000W three-phase	25000W three-phase	33000W three-phase
EVAPORATOR FANS	1 from 1200W single-phase 1 from 2000W Three-phase	3 from 1200W single-phase 1 from 2000W Three-phase	3 from 1200W single-phase 1 from 2000W Three-phase
SOLENOIDE FAN	Standard	Standard	Standard
OIL COMPRESSOR RESISTANCE	Standard	Standard	Standard
LIGHT CELL	Standard (Voltage free contact)	Standard (Voltage free contact)	Standard (Voltage free contact)

OPTIONAL ACCESSORIES

RS485**	✓	✓	✓
---------	---	---	---



GF25 E \*



GF40 E \*



GF50 E \*

In addition to assembling each device taking into account the technical and construction quality of the individual internal components, we pay great attention to the strength and quality of the materials of the external structures. These are already equipped with fixing brackets that allow quick and easy installation.

\* **Accessories:** fixing brackets provided  
\*\* **Communication card** for in cloud supervision

All products have the possibility of customization with your own brand. Customization requires a minimum of lots to be established at the order stage.





SERIES

# GF CR

Remote controller

Electrical panels for three-phase cold rooms

## COMPLETE PANEL BOARD SERIES

GF4 CR \_ GF12 CR \_ GF16 CR \_ GF25 CR  
GF40 CR \_ GF50 CR

The SERIES GF electrical panels have been designed for the management and control of complete Three-phase cold rooms. It is the ideal solution for those who want to combine maximum operational efficiency and ease of use. The versatility of this SERIES is even more appreciable. The customer, in fact, will be able to interface the panel with the remote electronic instrument more suited to his needs. This solution is ideal for those who want to install the panel away from the cold room and manage it with a remote instrument on the front. Maximum efficiency and versatility of assembly to guarantee an excellent relationship between costs and benefits. The use of electronic thermals and magnetothermic protections makes it possible to manage multiple applications with very few codes.

REMOTE CONTROLLER

ELECTRICAL PANELS FOR THREE-PHASE REFRIGERATORS

COMPLETE PANEL BOARD SERIES

PANEL CODE	GF4 CR	GF12 CR	GF16 CR
------------	--------	---------	---------

DESCRIPTION	Electric panel for three-phase cold rooms complete with compressor with adjustable range with electronic thermal from 1... 4A.	Electric panel for three-phase cold rooms complete with compressor with adjustable range with electronic thermal from 3... 12A.	Electric panel for three-phase cold rooms complete with compressor with adjustable range with electronic thermal from 4... 16A.
-------------	--	---	---

### TECHNICAL FEATURES

ELECTRONIC	Remote control external to the pane (not included)	Remote control external to the pane (not included)	Remote control external to the pane (not included)
BOX SIZE	370*275*175 mm	370*275*175 mm	370*275*175 mm
BOX SIZE COMPLETE WITH DOOR LOCK	370*275*175 mm	370*275*175 mm	370*275*175 mm
WEIGHT	5Kg	5Kg	5Kg
BOX LEVEL OF PROTECTION	IP65	IP65	IP65
RELATIVE HUMIDITY OF THE ENVIRONMENT	<90% RH	<90% RH	<90% RH
STORAGE TEMPERATURE	-10÷+60°C	-10÷+60°C	-10÷+60°C
WORKING TEMPERATURE	-5÷+45°C	-5÷+45°C	-5÷+45°C
SUPPLY	400V AC ±10% 50-60Hz	400V AC ±10% 50-60Hz	400V AC ±10% 50-60Hz
COMPRESSOR PROTECTION	Electric thermal relay	Electric thermal relay	Electric thermal relay
GENERAL PROTECTION	Standard Thermoswitch	Standard Thermoswitch	Standard Thermoswitch
SIGNALING AND ALARM	Led+Display	Led+Display	Led+Display

### INPUTS

CELL PROBE	NTC 10 Ohm 1%	NTC 10 Ohm 1%	NTC 10 Ohm 1%
EVAPORATOR PROBE	NTC 10 Ohm 1%	NTC 10 Ohm 1%	NTC 10 Ohm 1%
KWIWAN INPUT	Standard	Standard	Standard
HIGH/LOW GENERAL PRESSURE SWITCH INPUT	Standard	Standard	Standard



PANEL CODE	GF4 CR	GF12 CR	GF16 CR
OUTPUT			
COMPRESSOR	Three-phase adjustable range from 1...4A	Three-phase adjustable range from 3...12A	Three-phase adjustable range from 4...16A
CONDENSING FANS	850W single-phase	850W single-phase	850W single-phase
ELECTRIC DEFROSTING	10500W three-phase	10500W three-phase	10500W three-phase
EVAPORATOR FANS	850W single-phase	850W single-phase	850W single-phase
SOLENOIDE FAN	Standard	Standard	Standard
OIL COMPRESSOR RESISTANCE	Standard	Standard	Standard
LIGHT CELL	850W single-phase	850W single-phase	850W single-phase



GF4 CR \*



GF12 CR \*



GF16 CR \*

PANEL CODE	GF25 CR	GF40 CR	GF50 CR
DESCRIPTION			
	Electric panel for three-phase cold rooms complete with compressor with adjustable range with electronic thermal from 6... 25A.	Electric panel for three-phase cold rooms complete with compressor with adjustable range with electronic thermal from 10... 40A.	Electric panel for three-phase cold rooms complete with compressor with adjustable range with electronic thermal from 12.5... 50A.
TECHNICAL FEATURES			
ELECTRONIC	Remote control external to the pane (not included)	Remote control external to the pane (not included)	Remote control external to the pane (not included)
BOX SIZE	600*400*200 mm	600*400*200 mm	600*400*200 mm
BOX SIZE COMPLETE WITH DOOR LOCK	600*400*235 mm	600*400*235 mm	600*400*235 mm
WEIGHT	12Kg	22Kg	25Kg
BOX LEVEL OF PROTECTION	IP65	IP65	IP65
RELATIVE HUMIDITY OF THE ENVIRONMENT	<90% RH	<90% RH	<90% RH
STORAGE TEMPERATURE	-10÷+60°C	-10÷+60°C	-10÷+60°C
WORKING TEMPERATURE	-5÷+45°C	-5÷+45°C	-5÷+45°C
SUPPLY	400V AC ±10% 50-60Hz	400V AC ±10% 50-60Hz	400V AC ±10% 50-60Hz
COMPRESSOR PROTECTION	Electric thermal relay	Electric thermal relay	Electric thermal relay
GENERAL PROTECTION	Standard Thermoswitch	Standard Thermoswitch	Standard Thermoswitch
SIGNALING AND ALARM	Led	Led	Led

INPUTS			
KIWIAN INPUT	Standard	Standard	Standard
HIGH/LOW GENERAL PRESSURE SWITCH INPUT	Standard	Standard	Standard
OIL DIFFERENTIAL PRESSURE SWITCH INPUT	Standard	Standard	Standard

\* Accessories: fixing brackets provided

All products have the possibility of customization with your own brand. Customization requires a minimum of lots to be established at the order stage.



PANEL CODE	GF25-CR	GF40-CR	GF50-CR
------------	---------	---------	---------

OUTPUT			
COMPRESSOR	Three-phase adjustable range from 6...25A	Three-phase adjustable range from 10...40A	Three-phase adjustable range from 12,5...50A
CONDENSING FANS	2 from 1200W single-phase 1 from 2000W three-phase	2 from 1200W single-phase 1 from 2000W three-phase	2 from 1200W single-phase 1 from 2000W three-phase
ELECTRIC DEFROSTING	18000W three-phase	22000W three-phase	33000W three-phase
EVAPORATOR FANS	1 from 1200W single-phase 1 from 2000W three-phase	3 from 1200W single-phase 1 from 2000W three-phase	3 from 1200W single-phase 1 from 2000W three-phase
SOLENOIDE FAN	Standard	Standard	Standard
OIL COMPRESSOR RESISTANCE	Standard	Standard	Standard



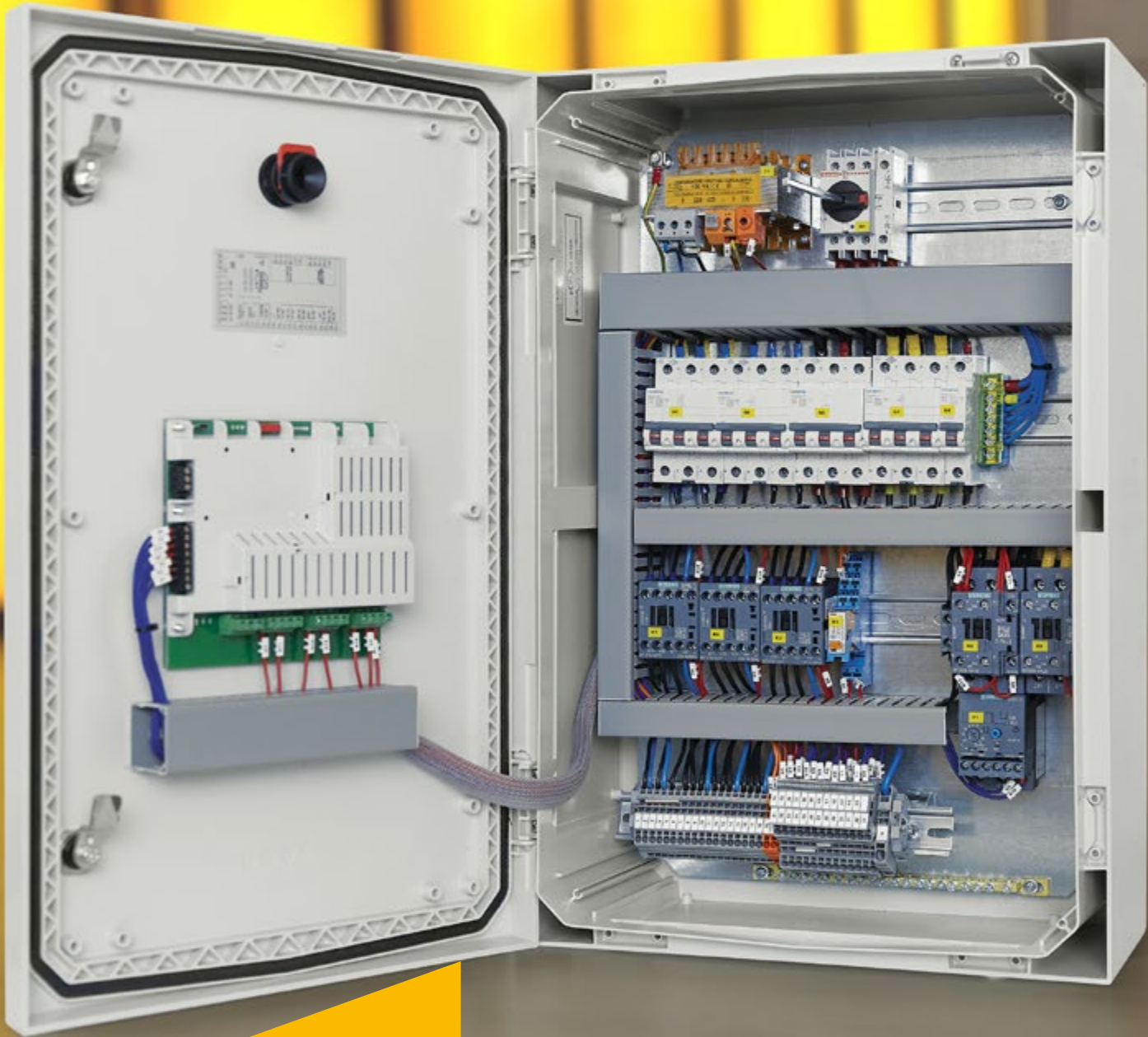
GF25 CR \*



GF40 CR \*



GF50 CR \*



The general architecture of each device provides for the optimal management of internal spaces to allow easy accessibility.

\* Accessories: fixing brackets provided

All products have the possibility of customization with your own brand. Customization requires a minimum of lots to be established at the order stage.





SERIES

# FC

DIECI ELECTRONIC

Electrical panels for three-phase cold rooms

## COMPLETE PANEL BOARD SERIES

The SERIES of FC cabinet front electrical panels, for the management and control of the evaporating unit only, have been designed to facilitate simple and intuitive use. It was designed to give the customer the opportunity to choose the electronic that best suits their needs from different brands of manufacturing companies. The whole SERIES FC is assembled with devices among the best on the market both for TECHNICAL FEATURES and for the good **value for money**. Standard magnetothermic protections guarantee a high level of efficiency and functionality of the electrical panels.

FC6 \_ FC10 \_ FC16 \_ FC21 \_ FC32  
FC41 \_ FC66 \_ FC1010 \_ FC1616

PANEL CODE	FC6	FC10	FC16
DESCRIPTION	Electrical panel for cold rooms evaporating unit only with electric defrost up to 6kW.	Electrical panel for cold rooms evaporating unit only with electric defrost up to 10kW.	Electrical panel for cold rooms evaporating unit only with electric defrost up to 16kW.
TECHNICAL FEATURES			
ELECTRONIC	Dieci Electric	Dieci Electric	Dieci Electric
BOX SIZE	370*275*175 mm	370*275*175 mm	370*275*175 mm
BOX SIZE COMPLETE WITH DOOR LOCK	370*275*175 mm	370*275*175 mm	370*275*175 mm
WEIGHT	5Kg	5Kg	6Kg
BOX LEVEL OF PROTECTION	IP65	IP65	IP65
RELATIVE HUMIDITY OF THE ENVIRONMENT	<90% RH	<90% RH	<90% RH
STORAGE TEMPERATURE	-10÷+60°C	-10÷+60°C	-10÷+60°C
WORKING TEMPERATURE	-5÷+45°C	-5÷+45°C	-5÷+45°C
SUPPLY	400V AC ±10% 50-60Hz	400V AC ±10% 50-60Hz	400V AC ±10% 50-60Hz
GENERAL PROTECTION	Standard Thermoswitch	Standard Thermoswitch	Standard Thermoswitch
SIGNALING AND ALARM	Led+Display	Led+Display	Led+Display
DEFROSTING MANAGEMENT WITH CLOCK	RTC	RTC	RTC
INPUTS			
CELL PROBE	NTC 10 Ohm 1%	NTC 10 Ohm 1%	NTC 10 Ohm 1%
EVAPORATOR PROBE	NTC 10 Ohm 1%	NTC 10 Ohm 1%	NTC 10 Ohm 1%
ALARM INPUT FROM UNIT	Standard	Standard	Standard
MICRO DOOR	Standard	Standard	Standard



PANEL CODE	FC6	FC10	FC16
OUTPUT			
ELECTRIC DEFROST	6000W three-phase	10000W three-phase	16000W three-phase
EVAPORATOR FANS	2000W single-phase/4000W three-phase	2000W single-phase/4000W three-phase	2000W single-phase/4000W three-phase
SOLENOIDE FAN	Standard	Standard	Standard
LIGHT CELL	850W single-phase	850W single-phase	850W single-phase
UNITY CONSENT	Standard (Voltage free contact)	Standard (Voltage free contact)	Standard (Voltage free contact)
ALARM RELAY	Standard	Standard	Standard

OPTIONAL ACCESSORIES

RS485/WIFI**	✓	✓	✓
--------------	---	---	---



FC6 \*



FC10 \*



FC16 \*

PANEL CODE	FC21	FC32	FC41
DESCRIPTION			
	Electrical panel for cold rooms evaporating unit only with electric defrost up to 21kW.	Electrical panel for cold rooms evaporating unit only with electric defrost up to 32kW.	Electrical panel for cold rooms evaporating unit only with electric defrost up to 41kW.
TECHNICAL FEATURES			
ELECTRONIC	Dieci Electric	Dieci Electric	Dieci Electric
BOX SIZE	600*400*200 mm	600*400*200 mm	600*400*200 mm
BOX SIZE COMPLETE WITH DOOR LOCK	600*400*235 mm	600*400*235 mm	600*400*235 mm
WEIGHT	12Kg	20Kg	20Kg
BOX LEVEL OF PROTECTION	IP65	IP65	IP65
RELATIVE HUMIDITY OF THE ENVIRONMENT	<90% RH	<90% RH	<90% RH
STORAGE TEMPERATURE	-10÷+60°C	-10÷+60°C	-10÷+60°C
WORKING TEMPERATURE	-5÷+45°C	-5÷+45°C	-5÷+45°C
SUPPLY	400V AC ±10% 50-60Hz	400V AC ±10% 50-60Hz	400V AC ±10% 50-60Hz
GENERAL PROTECTION	Standard thermoswitch	Standard thermoswitch	Standard Thermoswitch
SIGNALING AND ALARM	Led+Display	Led+Display	Led+Display
DEFROSTING MANAGEMENT WITH CLOCK	RTC	RTC	RTC

INPUTS

CELL PROBE	NTC 10 Ohm 1%	NTC 10 Ohm 1%	NTC 10 Ohm 1%
EVAPORATOR PROBE	NTC 10 Ohm 1%	NTC 10 Ohm 1%	NTC 10 Ohm 1%
ALARM INPUT FROM UNIT	Standard	Standard	Standard
MICRO DOOR	Standard	Standard	Standard

\* Accessories: fixing brackets provided  
\*\* Communication card for in cloud supervision

All products have the possibility of customization with your own brand.  
Customization requires a minimum of lots to be established at the order stage.



PANEL CODE	FC21	FC32	FC41
OUTPUT			
ELECTRIC DEFROST	21000W three-phase	32000W three-phase	41000W three-phase
EVAPORATOR FANS	3 from 1000W single-phase 3 from 2000W three-phase	4 from 1500W single-phase 4 from 3000W three-phase	4 from 1500W single-phase 4 from 3000W three-phase
SOLENOIDE FAN	Standard	Standard	Standard
LIGHT CELL	Standard (Voltage free contact)	Standard (Voltage free contact)	Standard (Voltage free contact)
UNITY CONSENT	Standard (Voltage free contact)	Standard (Voltage free contact)	Standard (Voltage free contact)
ALARM RELAY	Standard	Standard	Standard

OPTIONAL ACCESSORIES

RS485/WIFI**	✓	✓	✓
--------------	---	---	---



FC21 \*



FC32 \*



FC41 \*

PANEL CODE	FC66	FC1010	FC1616
DESCRIPTION			
	Electrical panel for cold rooms only evaporating unit double evaporator with electric defrost up to 6kW.	Electric panel for cold rooms only double evaporator evaporator unit with electric defrost up to 10kW.	Electrical panel for cold rooms only evaporating unit double evaporator with electric defrost up to 16kW.
TECHNICAL FEATURES			
ELECTRONIC	Dieci Electric	Dieci Electric	Dieci Electric
BOX SIZE	600*400*200 mm	600*400*200 mm	600*400*200 mm
BOX SIZE COMPLETE WITH DOOR LOCK	600*400*235 mm	600*400*235 mm	600*400*235 mm
WEIGHT	12Kg	12Kg	13Kg
BOX LEVEL OF PROTECTION	IP65	IP65	IP65
RELATIVE HUMIDITY OF THE ENVIRONMENT	<90% RH	<90% RH	<90% RH
STORAGE TEMPERATURE	-10÷+60°C	-10÷+60°C	-10÷+60°C
WORKING TEMPERATURE	-5÷+45°C	-5÷+45°C	-5÷+45°C
SUPPLY	400V AC ±10% 50-60Hz	400V AC ±10% 50-60Hz	400V AC ±10% 50-60Hz
GENERAL PROTECTION	Standard thermoswitch	Standard thermoswitch	Standard thermoswitch
SIGNALING AND ALARM	Led+Display	Led+Display	Led+Display
DEFROSTING MANAGEMENT WITH CLOCK	RTC	RTC	RTC

INPUTS

CELL PROBE	NTC 10 Ohm 1%	NTC 10 Ohm 1%	NTC 10 Ohm 1%
EVAPORATOR PROBE 1	NTC 10 Ohm 1%	NTC 10 Ohm 1%	NTC 10 Ohm 1%
EVAPORATOR PROBE 2	NTC 10 Ohm 1%	NTC 10 Ohm 1%	NTC 10 Ohm 1%
ALARM INPUT FROM UNIT 1	Standard	Standard	Standard
ALARM INPUT FROM UNIT 2	Standard	Standard	Standard
MICRO DOOR	Standard	Standard	Standard

\* Accessories: fixing brackets provided  
\*\* Communication card for in cloud supervision

All products have the possibility of customization with your own brand.  
Customization requires a minimum of lots to be established at the order stage.





PANEL CODE	FC66	FC1010	FC1616
OUTPUT			
ELECTRIC DEFROST 1	6000W three-phase	10000W three-phase	16000W three-phase
ELECTRIC DEFROST 2	6000W three-phase	10000W three-phase	16000W three-phase
EVAPORATOR FANS 1	2000W single-phase/4000W three-phase	2000W single-phase/4000W three-phase	2000W single-phase/4000W three-phase
EVAPORATOR FANS 2	2000W single-phase/4000W three-phase	2000W single-phase/4000W three-phase	2000W single-phase/4000W three-phase
SOLENOIDE FAN	Standard	Standard	Standard
LIGHT CELL	850W single-phase	850W single-phase	850W single-phase
UNITY CONSENT 1	Standard (Voltage free contact)	Standard (Voltage free contact)	Standard (Voltage free contact)
UNITY CONSENT 2	Standard (Voltage free contact)	Standard (Voltage free contact)	Standard (Voltage free contact)
ALARM RELAY	Standard	Standard	Standard

OPTIONAL ACCESSORIES

RS485/WIFI\*\*

✓

✓

✓



\* Accessories: fixing brackets provided  
\*\* Communication card for in cloud supervision

All products have the possibility of customization with your own brand.  
Customization requires a minimum of lots to be established at the order stage.



We dedicate specific resources to the continuous search for components, among the best brands on the market, which guarantee high standards from a technical and functional point of view.



SERIES

# FC

DIECI ELECTRONIC

Electric panels for three-phase cell front

## COMPLETE PANEL BOARD SERIES WITH ELECTRONIC VALVES

The SERIES of FC cabinet front electrical panels, for the management and control of the evaporating unit only, complete with single-pole electronic valve up to 260mA. It is proposed as a solution, they have been designed to facilitate simple and intuitive use. It was designed to give the customer the opportunity to choose the electronic that best suits their needs from different brands of manufacturing companies. The whole SERIES FC is assembled with devices among the best on the market both for TECHNICAL FEATURES and for the good value for money. Standard magnetothermic protections guarantee a high level of efficiency and functionality of the electrical panels.

FC6 ELECTRONIC \_ FC10 ELECTRONIC \_ FC16 ELECTRONIC  
FC21 ELECTRONIC

DIECI ELECTRONIC

ELECTRIC BOARDS FOR THREE-PHASE FRONT CELL

COMPLETE PANEL BOARD SERIES WITH VALVES

PANEL CODE	FC6 ELECTRONIC	FC10 ELECTRONIC
------------	----------------	-----------------

DESCRIPTION	Electric panel for cold rooms evaporating unit only with electric defrost up to 6kW with single-pole electronic valve.	Electric panel for cold rooms evaporating unit only with electric defrost up to 10kW with single-pole electronic valve.
-------------	--	---

### TECHNICAL FEATURES

ELECTRONIC	Dieci Electric	Dieci Electric
BOX SIZE	370*275*175 mm	370*275*175 mm
BOX SIZE COMPLETE WITH DOOR LOCK	370*275*175 mm	370*275*175 mm
WEIGHT	5Kg	5Kg
BOX LEVEL OF PROTECTION	IP65	IP65
RELATIVE HUMIDITY OF THE ENVIRONMENT	<90% RH	<90% RH
STORAGE TEMPERATURE	-10÷+60°C	-10÷+60°C
WORKING TEMPERATURE	-5÷+45°C	-5÷+45°C
SUPPLY	400V AC ±10% 50-60Hz	400V AC ±10% 50-60Hz
GENERAL PROTECTION	Standard thermoswitch	Standard thermoswitch
SIGNALING AND ALARM	Led+Display	Led+Display
DEFROSTING MANAGEMENT WITH CLOCK	RTC	RTC

### INPUTS

CELL PROBE	NTC 10 Ohm 1%	NTC 10 Ohm 1%
EVAPORATOR PROBE 1	NTC 10 Ohm 1%	NTC 10 Ohm 1%
SUCTION PROBE	NTC 10 Ohm 1%	NTC 10 Ohm 1%
PRESSURE PROBE	4-20mA	4-20mA
ALARM INPUT FROM UNIT	Standard	Standard
MICRO DOOR	Standard	Standard





PANEL CODE	FC6 ELECTRONIC	FC10 ELECTRONIC
OUTPUT		
ELECTRIC DEFROSTING	6000W three-phase	10000W three-phase
EVAPORATOR FANS	2000W single-phase/4000W three-phase	2000W single-phase/4000W three-phase
SOLENOIDE FAN	Standard	Standard
ELECTRONIC SINGLE-POLE VALVE	Max 260mA distance 9M	Max 260mA distance 9M
LIGHT CELL	850W single-phase	850W single-phase
UNITY CONSENT	Standard (Voltage free contact)	Standard (Voltage free contact)
ALARM RELAY	Standard	Standard

OPTIONAL ACCESSORIES

RS485/WIFI**	✓	✓	✓
--------------	---	---	---



FC6 ELECTRONIC \*



FC10 ELECTRONIC \*

PANEL CODE	FC16 ELECTRONIC	FC21 ELECTRONIC
DESCRIPTION		
	Electrical panel for cold rooms evaporating unit only with electric defrost up to 16kW with single-pole electronic valve.	Electrical panel for cold rooms evaporating unit only with electric defrost up to 21kW with single-pole electronic valve.
TECHNICAL FEATURES		
ELECTRONIC	Dieci Electric	Dieci Electric
BOX SIZE	370*275*175 mm	600*400*200 mm
BOX SIZE COMPLETE WITH DOOR LOCK	370*275*175 mm	600*400*235 mm
WEIGHT	5Kg	20Kg
BOX LEVEL OF PROTECTION	IP65	IP65
RELATIVE HUMIDITY OF THE ENVIRONMENT	<90% RH	<90% RH
STORAGE TEMPERATURE	-10÷+60°C	-10÷+60°C
WORKING TEMPERATURE	-5÷+45°C	-5÷+45°C
SUPPLY	400V AC ±10% 50-60Hz	400V AC ±10% 50-60Hz
GENERAL PROTECTION	Thermoswitch included	Thermoswitch included
SIGNALING AND ALARM	Led+Display	Led+Display
DEFROSTING MANAGEMENT WITH CLOCK	RTC	RTC
INPUTS		
CELL PROBE	NTC 10 Ohm 1%	NTC 10 Ohm 1%
EVAPORATOR PROBE	NTC 10 Ohm 1%	NTC 10 Ohm 1%
SUCTION PROBE	NTC 10 Ohm 1%	NTC 10 Ohm 1%
PRESSURE PROBE	4-20mA	4-20mA
ALARM INPUT FROM UNIT	Standard	Standard
MICRO DOOR	Standard	Standard

\* Accessories: fixing brackets provided  
\*\* Communication card for in cloud supervision

All products have the possibility of customization with your own brand.  
Customization requires a minimum of lots to be established at the order stage.





PANEL CODE	FC16-ELECTRONIC	FC21-ELECTRONIC
OUTPUT		
ELECTRIC DEFROSTING	16000W three-phase	21000W three-phase
EVAPORATOR FANS	2000W single-phase/4000W three-phase	2000W single-phase/4000W three-phase
SOLENOIDE FAN	Standard	Standard
ELECTRONIC SINGLE-POLE VALVE	Max 260mA distance 9M	Max 260mA distance 9M
LIGHT CELL	850W single-phase	850W single-phase
UNIT CONSENT	Standard (Voltage free contact)	Standard (Voltage free contact)
ALARM RELAY	Standard	Standard

OPTIONAL ACCESSORIES

RS485/WIFI\*\*

✓

✓



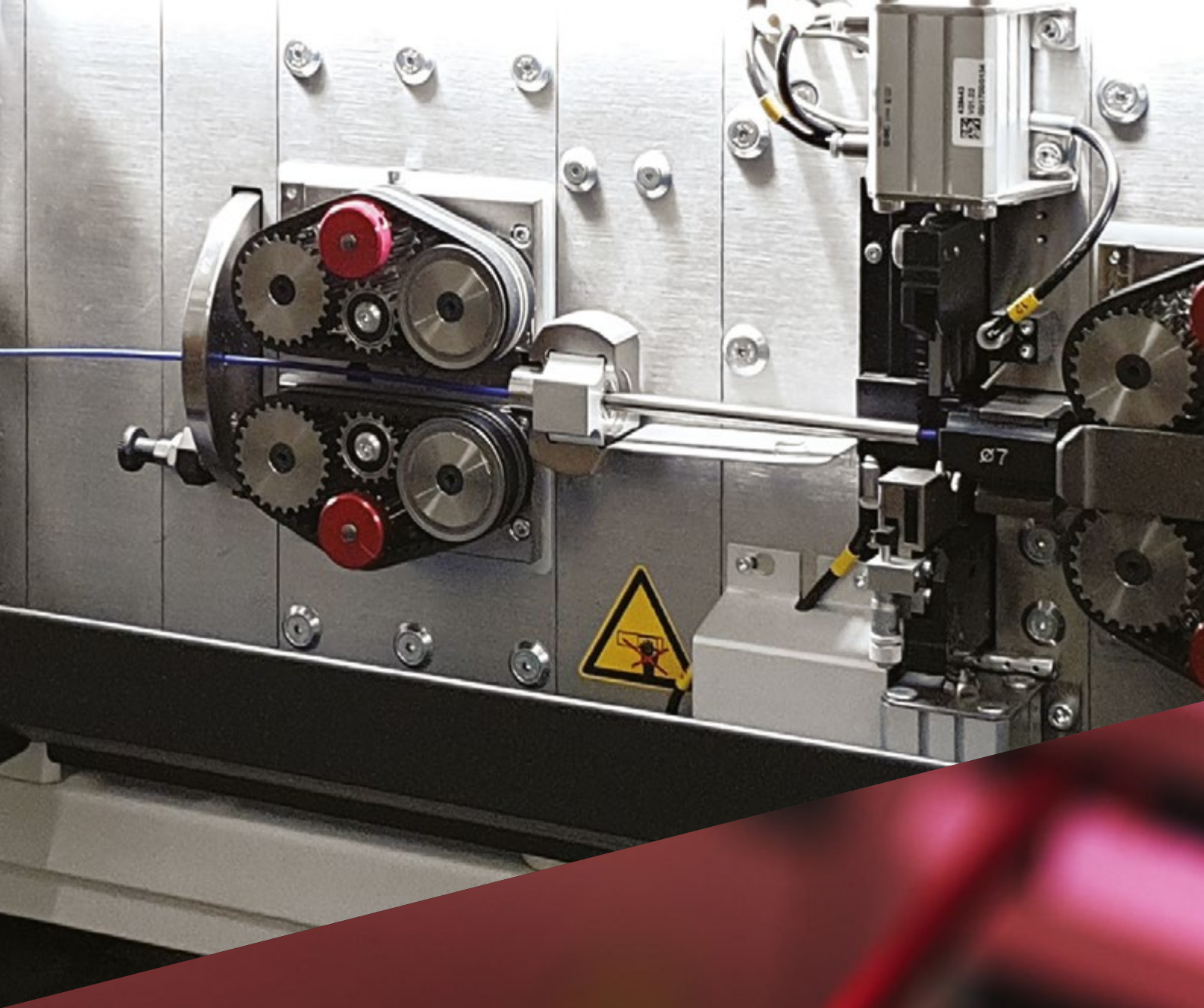
FC16 ELECTRONIC \*



FC21 ELECTRONIC \*

\* **Accessories:** fixing brackets provided  
\*\* **Communication card** for in cloud supervision

All products have the possibility of customization with your own brand.  
Customization requires a minimum of lots to be established at the order stage.



To optimize and make assembly processes more efficient, we use state-of-the-art machinery for the preparation of wiring.



SERIES

# FC D

Electronic Dixell

Electric panels for three-phase cell front

COMPLETE  
PANEL BOARD SERIES

FC6 D \_ FC10 D \_ FC16 D \_ FC21 D \_ FC32 D  
FC41 D \_ FC66 D \_ FC1010 D \_ FC1616 D

The SERIES of FC cabinet front electrical panels, for the management and control of the evaporating unit only, have been designed to facilitate simple and intuitive use.

It was designed to give the customer the opportunity to choose the electronic that best suits their needs from different brands of manufacturing companies.

The whole SERIES FC is assembled with devices among the best on the market both for TECHNICAL FEATURES and for the good **value for money**.

Standard magnetothermic protections guarantee a high level of efficiency and functionality of the electrical panels.

PANEL CODE	FC6 D	FC10 D	FC16 D
DESCRIPTION	Electrical panel for cold rooms evaporating unit only with electric defrost up to 6kW.	Electrical panel for cold rooms evaporating unit only with electric defrost up to 10kW.	Electrical panel for cold rooms evaporating unit only with electric defrost up to 16kW.
TECHNICAL FEATURES			
ELECTRONIC	Dixell	Dixell	Dixell
BOX SIZE	370*275*175 mm	370*275*175 mm	370*275*175 mm
BOX SIZE COMPLETE WITH DOOR LOCK	370*275*175 mm	370*275*175 mm	370*275*175 mm
WEIGHT	5Kg	5Kg	6Kg
BOX LEVEL OF PROTECTION	IP65	IP65	IP65
RELATIVE HUMIDITY OF THE ENVIRONMENT	<90% RH	<90% RH	<90% RH
STORAGE TEMPERATURE	-10÷+60°C	-10÷+60°C	-10÷+60°C
WORKING TEMPERATURE	-5÷+45°C	-5÷+45°C	-5÷+45°C
SUPPLY	400V AC ±10% 50-60Hz	400V AC ±10% 50-60Hz	400V AC ±10% 50-60Hz
GENERAL PROTECTION	Standard Thermoswitch	Standard Thermoswitch	Standard Thermoswitch
SIGNALING AND ALARM	Led+Display	Led+Display	Led+Display
INPUTS			
CELL PROBE	NTC 10 Ohm 1%	NTC 10 Ohm 1%	NTC 10 Ohm 1%
EVAPORATOR PROBE	NTC 10 Ohm 1%	NTC 10 Ohm 1%	NTC 10 Ohm 1%
MICRO DOOR	Standard	Standard	Standard



PANEL CODE	FC6 D	FC10 D	FC16 D
------------	-------	--------	--------

OUTPUT

ELECTRIC DEFROSTING	6000W three-phase	10000W three-phase	16000W three-phase
EVAPORATOR FANS	2000W single-phase/4000W three-phase	2000W single-phase/4000W three-phase	2000W single-phase/4000W three-phase
SOLENOIDE FAN	Standard	Standard	Standard
LIGHT CELL	850W single-phase	850W single-phase	850W single-phase
UNIT CONSENT	Standard (Voltage free contact)	Standard (Voltage free contact)	Standard (Voltage free contact)

OPTIONAL ACCESSORIES

RS485\*\*

✓

✓

✓



FC6 D \*



FC10 D \*



FC16 D \*

PANEL CODE	FC21 D	FC32 D	FC41 D
------------	--------	--------	--------

DESCRIPTION

Electrical panel for cold rooms evaporating unit only with electric defrost up to 21kW.	Electric panel for cold rooms evaporating unit only with electric defrost up to 32kW.	Electrical panel for cold rooms evaporating unit only with electric defrost up to 41kW.
---	---	---

TECHNICAL FEATURES

ELECTRONIC	Dixell	Dixell	Dixell
BOX SIZE	600*400*200 mm	600*400*200 mm	600*400*200 mm
BOX SIZE COMPLETE WITH DOOR LOCK	600*400*235 mm	600*400*235 mm	600*400*235 mm
WEIGHT	12Kg	20Kg	20Kg
BOX LEVEL OF PROTECTION	IP65	IP65	IP65
RELATIVE HUMIDITY OF THE ENVIRONMENT	<90% RH	<90% RH	<90% RH
STORAGE TEMPERATURE	-10÷+60°C	-10÷+60°C	-10÷+60°C
WORKING TEMPERATURE	-5÷+45°C	-5÷+45°C	-5÷+45°C
SUPPLY	400V AC ±10% 50-60Hz	400V AC ±10% 50-60Hz	400V AC ±10% 50-60Hz
GENERAL PROTECTION	Standard thermoswitch	Standard thermoswitch	Standard thermoswitch
SIGNALING AND ALARM	Led+Display	Led+Display	Led+Display

INPUTS

CELL PROBE	NTC 10 Ohm 1%	NTC 10 Ohm 1%	NTC 10 Ohm 1%
EVAPORATOR PROBE	NTC 10 Ohm 1%	NTC 10 Ohm 1%	NTC 10 Ohm 1%
MICRO DOOR	Standard	Standard	Standard

\* Accessories: fixing brackets provided  
\*\* Communication card for supervision

All products have the possibility of customization with your own brand.  
Customization requires a minimum of lots to be established at the order stage.





PANEL CODE	FC21 D	FC32 D	FC41 D
------------	--------	--------	--------

OUTPUT

ELECTRIC DEFROSTING	21000W three-phase	32000W three-phase	41000W three-phase
EVAPORATOR FANS	3 from 1000W single-phase 3 from 2000W three-phase	4 from 1500W single-phase 4 from 3000W three-phase	4 from 1500W single-phase 4 from 3000W three-phase
SOLENOIDE FAN	Standard	Standard	Standard
LIGHT CELL	Standard (Voltage free contact)	Standard (Voltage free contact)	Standard (Voltage free contact)
UNIT CONSENT	Standard (Voltage free contact)	Standard (Voltage free contact)	Standard (Voltage free contact)

OPTIONAL ACCESSORIES

RS485**	✓	✓	✓
---------	---	---	---



FC21 D \*



FC32 D \*



FC41 D \*

PANEL CODE	FC66 D	FC1010 D	FC1616 D
------------	--------	----------	----------

DESCRIPTION

Electrical panel for cold rooms only evaporating unit double evaporator with electric defrost up to 6kW.	Electric panel for cold rooms only evaporating unit double evaporator with electric defrost up to 10kW.	Electrical panel for cold rooms only evaporating unit double evaporator with electric defrost up to 16kW.
--	---	---

TECHNICAL FEATURES

ELECTRONIC	Dixell	Dixell	Dixell
BOX SIZE	600*400*200 mm	600*400*200 mm	600*400*200 mm
BOX SIZE COMPLETE WITH DOOR LOCK	600*400*235 mm	600*400*235 mm	600*400*235 mm
WEIGHT	12Kg	12Kg	13Kg
BOX LEVEL OF PROTECTION	IP65	IP65	IP65
RELATIVE HUMIDITY OF THE ENVIRONMENT	<90% RH	<90% RH	<90% RH
STORAGE TEMPERATURE	-10÷+60°C	-10÷+60°C	-10÷+60°C
WORKING TEMPERATURE	-5÷+45°C	-5÷+45°C	-5÷+45°C
SUPPLY	400V AC ±10% 50-60Hz	400V AC ±10% 50-60Hz	400V AC ±10% 50-60Hz
GENERAL PROTECTION	Standard Thermoswitch	Standard Thermoswitch	Standard Thermoswitch
SIGNALING AND ALARM	Led+Display	Led+Display	Led+Display

INPUTS

CELL PROBE	NTC 10 Ohm 1%	NTC 10 Ohm 1%	NTC 10 Ohm 1%
EVAPORATOR PROBE 1	External prodigies thermostat (not included)	External prodigies thermostat (not included)	External prodigies thermostat (not included)
EVAPORATOR PROBE 2	External prodigies thermostat (not included)	External prodigies thermostat (not included)	External prodigies thermostat (not included)
MICRO DOOR	Standard	Standard	Standard

\* Accessories: fixing brackets provided  
\*\* Communication card for supervision

All products have the possibility of customization with your own brand.  
Customization requires a minimum of lots to be established at the order stage.



PANEL CODE	FC66 D	FC1010 D	FC1616 D
------------	--------	----------	----------

OUTPUT			
ELECTRIC DEFROST 1	6000W Three-phase	10000W Three-phase	16000W Three-phase
ELECTRIC DEFROST 2	6000W Three-phase	10000W Three-phase	16000W Three-phase
EVAPORATOR FANS 1	2000W single-phase/4000W Three-phase	2000W single-phase/4000W Three-phase	2000W single-phase/4000W Three-phase
EVAPORATOR FANS 2	2000W single-phase/4000W Three-phase	2000W single-phase/4000W Three-phase	2000W single-phase/4000W Three-phase
SOLENOIDE FAN	Standard	Standard	Standard
LIGHT CELL	850W single-phase	850W single-phase	850W single-phase
UNIT CONSENT 1	Standard (Voltage free contact)	Standard (Voltage free contact)	Standard (Voltage free contact)
UNIT CONSENT 1	Standard (Voltage free contact)	Standard (Voltage free contact)	Standard (Voltage free contact)

OPTIONAL ACCESSORIES

RS485**	✓	✓	✓
---------	---	---	---



FC66 D \*



FC1010 D \*



FC1616 D \*

\* **Accessories:** fixing brackets provided  
\*\* **Communication card for supervision**

All products have the possibility of customization with your own brand.  
Customization requires a minimum of lots to be established at the order stage.



All the assembly phases follow specific production processes without ever neglecting anything but defining every single detail in detail.



SERIES

# FC C

Electronic Carel

Electric panels for three-phase cell front

## COMPLETE PANEL BOARD SERIES

FC6 C \_ FC10 C \_ FC16 C \_ FC21 C \_ FC32 C  
FC41 C \_ FC66 C \_ FC1010 C \_ FC1616 C

The SERIES of FC cabinet front electrical panels, for the management and control of the evaporating unit only, have been designed to facilitate simple and intuitive use. It was designed to give the customer the opportunity to choose the electronic that best suits their needs from different brands of manufacturing companies. The whole SERIES FC is assembled with devices among the best on the market both for characteristics and techniques and for the good **value for money**. Standard magnetothermic protections guarantee a high level of efficiency and functionality of the electrical panels.

CAREL ELECTRONIC

ELECTRIC BOARDS FOR THREE-PHASE FRONT CELL

COMPLETE PANEL BOARD SERIES

PANEL CODE	FC6 C	FC10 C	FC16 C
DESCRIPTION	Electrical panel for cold rooms evaporating unit only with electric defrost up to 6kW.	Electrical panel for cold rooms evaporating unit only with electric defrost up to 10kW.	Electrical panel for cold rooms evaporating unit only with electric defrost up to 16kW.
TECHNICAL FEATURES			
ELECTRONIC	Carel	Carel	Carel
BOX SIZE	370*275*175 mm	370*275*175 mm	370*275*175 mm
BOX SIZE COMPLETE WITH DOOR LOCK	370*275*175 mm	370*275*175 mm	370*275*175 mm
WEIGHT	5Kg	5Kg	6Kg
BOX LEVEL OF PROTECTION	IP65	IP65	IP65
RELATIVE HUMIDITY OF THE ENVIRONMENT	<90% RH	<90% RH	<90% RH
STORAGE TEMPERATURE	-10÷+60°C	-10÷+60°C	-10÷+60°C
WORKING TEMPERATURE	-5÷+45°C	-5÷+45°C	-5÷+45°C
SUPPLY	400V AC ±10% 50-60Hz	400V AC ±10% 50-60Hz	400V AC ±10% 50-60Hz
GENERAL PROTECTION	Standard Thermoswitch	Standard Thermoswitch	Standard Thermoswitch
SIGNALING AND ALARM	Led+Display	Led+Display	Led+Display
INPUTS			
CELL PROBE	NTC 10 Ohm 1%	NTC 10 Ohm 1%	NTC 10 Ohm 1%
EVAPORATOR PROBE	NTC 10 Ohm 1%	NTC 10 Ohm 1%	NTC 10 Ohm 1%
MICRO DOOR	Standard	Standard	Standard





PANEL CODE	FC6 C	FC10 C	FC16 C
OUTPUT			
ELECTRIC DEFROSTING	6000W Three-phase	10000W Three-phase	16000W Three-phase
EVAPORATOR FANS	2000W single-phase/4000W Three-phase	2000W single-phase/4000W Three-phase	2000W single-phase/4000W Three-phase
SOLENOIDE FAN	Standard	Standard	Standard
LIGHT CELL	850W single-phase	850W single-phase	850W single-phase
UNIT CONSENT	Standard (Voltage free contact)	Standard (Voltage free contact)	Standard (Voltage free contact)

OPTIONAL ACCESSORIES

RS485**	✓	✓	✓
---------	---	---	---



FC6 C \*



FC10 C \*



FC16 C \*

PANEL CODE	FC21 C	FC32 C	FC41 C
DESCRIPTION			
	Electrical panel for cold rooms evaporating unit only with electric defrost up to 21kW.	Electrical panel for cold rooms evaporating unit only with electric defrost up to 32kW.	Electrical panel for cold rooms evaporating unit only with electric defrost up to 41kW.
TECHNICAL FEATURES			
ELECTRONIC	Carel	Carel	Carel
BOX SIZE	600*400*200 mm	600*400*200 mm	600*400*200 mm
BOX SIZE COMPLETE WITH DOOR LOCK	600*400*235 mm	600*400*235 mm	600*400*235 mm
WEIGHT	12Kg	20Kg	20Kg
BOX LEVEL OF PROTECTION	IP65	IP65	IP65
RELATIVE HUMIDITY OF THE ENVIRONMENT	<90% RH	<90% RH	<90% RH
STORAGE TEMPERATURE	-10÷+60°C	-10÷+60°C	-10÷+60°C
WORKING TEMPERATURE	-5÷+45°C	-5÷+45°C	-5÷+45°C
SUPPLY	400V AC ±10% 50-60Hz	400V AC ±10% 50-60Hz	400V AC ±10% 50-60Hz
GENERAL PROTECTION	Standard Thermoswitch	Standard Thermoswitch	Standard Thermoswitch
SIGNALING AND ALARM	Led+Display	Led+Display	Led+Display

INPUTS

CELL PROBE	NTC 10 Ohm 1%	NTC 10 Ohm 1%	NTC 10 Ohm 1%
EVAPORATOR PROBE	NTC 10 Ohm 1%	NTC 10 Ohm 1%	NTC 10 Ohm 1%
MICRO DOOR	Standard	Standard	Standard

\* Accessories: fixing brackets provided  
\*\* Communication card for supervision

All products have the possibility of customization with your own brand.  
Customization requires a minimum of lots to be established at the order stage.



PANEL CODE	FC21 C	FC32 C	FC41 C
------------	--------	--------	--------

OUTPUT

ELECTRIC DEFROSTING	21000W Three-phase	32000W Three-phase	41000W Three-phase
EVAPORATOR FANS	3 from 1000W single-phase 3 from 2000W Three-phase	4 from 1500W single-phase 4 from 3000W Three-phase	4 from 1500W single-phase 4 from 3000W Three-phase
SOLENOIDE FAN	Standard	Standard	Standard
LIGHT CELL	Standard (Voltage free contact)	Standard (Voltage free contact)	Standard (Voltage free contact)
UNIT CONSENT	Standard (Voltage free contact)	Standard (Voltage free contact)	Standard (Voltage free contact)

OPTIONAL ACCESSORIES

RS485**	✓	✓	✓
---------	---	---	---



FC21 C \*



FC32 C \*



FC41 C \*

PANEL CODE	FC66 C	FC1010 C	FC1616 C
------------	--------	----------	----------

DESCRIPTION

Electrical panel for cold rooms only evaporating unit double evaporator with electric defrost up to 6kW.	Electric panel for cold rooms only evaporating unit double evaporator with electric defrost up to 10kW.	Electrical panel for cold rooms only evaporating unit double evaporator with electric defrost up to 16kW.
--	---	---

TECHNICAL FEATURES

ELECTRONIC	Carel	Carel	Carel
BOX SIZE	600*400*200 mm	600*400*200 mm	600*400*200 mm
BOX SIZE COMPLETE WITH DOOR LOCK	600*400*235 mm	600*400*235 mm	600*400*235 mm
WEIGHT	12Kg	12Kg	13Kg
BOX LEVEL OF PROTECTION	IP65	IP65	IP65
RELATIVE HUMIDITY OF THE ENVIRONMENT	<90% RH	<90% RH	<90% RH
STORAGE TEMPERATURE	-10÷+60°C	-10÷+60°C	-10÷+60°C
WORKING TEMPERATURE	-5÷+45°C	-5÷+45°C	-5÷+45°C
SUPPLY	400V AC ±10% 50-60Hz	400V AC ±10% 50-60Hz	400V AC ±10% 50-60Hz
GENERAL PROTECTION	Standard thermoswitch	Standard thermoswitch	Standard thermoswitch
SIGNALING AND ALARM	Led+Display	Led+Display	Led+Display

INPUTS

CELL PROBE	NTC 10 Ohm 1%	NTC 10 Ohm 1%	NTC 10 Ohm 1%
EVAPORATOR PROBE 1	External prodigies thermostat (not included)	External prodigies thermostat (not included)	External prodigies thermostat (not included)
EVAPORATOR PROBE 2	External prodigies thermostat (not included)	External prodigies thermostat (not included)	External prodigies thermostat (not included)
MICRO DOOR	Standard	Standard	Standard

\* Accessories: fixing brackets provided  
\*\* Communication card for supervision

All products have the possibility of customization with your own brand.  
Customization requires a minimum of lots to be established at the order stage.



PANEL CODE	FC66 C	FC1010 C	FC1616 C
------------	--------	----------	----------

OUTPUT			
Electric defrost 1	6000W three-phase	10000W three-phase	16000W three-phase
Electric defrost 2	6000W three-phase	10000W three-phase	16000W three-phase
EVAPORATOR FANS 1	2000W single-phase/4000W three-phase	2000W single-phase/4000W three-phase	2000W single-phase/4000W three-phase
EVAPORATOR FANS 2	2000W single-phase/4000W three-phase	2000W single-phase/4000W three-phase	2000W single-phase/4000W three-phase
SOLENOIDE FAN	Standard	Standard	Standard
LIGHT CELL	850W single-phase	850W single-phase	850W single-phase
UNIT CONSENT 1	Standard (Voltage free contact)	Standard (Voltage free contact)	Standard (Voltage free contact)
UNIT CONSENT 2	Standard (Voltage free contact)	Standard (Voltage free contact)	Standard (Voltage free contact)

OPTIONAL ACCESSORIES

RS485**	✓	✓	✓
---------	---	---	---



FC66 C \*



FC1010 C \*



FC1616 C \*



Thanks to the automatic, precise and programmable numerical control machine, each box in both ABS and metal is drilled according to the components that will be assembled. In this way it is possible to install the most suitable electronic controller for different needs.

\* Accessories: fixing brackets provided  
\*\* Communication card for supervision

All products have the possibility of customization with your own brand.  
Customization requires a minimum of lots to be established at the order stage.





SERIES

# FC E

Electronic Eliwell

Electrical panels for three-phase cell front

## COMPLETE PANEL BOARD SERIES

FC6 E \_ FC10 E \_ FC16 E \_ FC21 E \_ FC32 E  
FC41 E \_ FC66 E \_ FC1010 E \_ FC1616 E

The SERIES of FC cabinet front electrical panels, for the management and control of the evaporating unit only, have been designed to facilitate simple and intuitive use. It was designed to give the customer the opportunity to choose the electronic that best suits their needs from different brands of manufacturing companies. The whole SERIES FC is assembled with devices among the best on the market both for characteristics and techniques and for the good **value for money**. Standard magnetothermic protections guarantee a high level of efficiency and functionality of the electrical panels.

ELECTRONIC ELIWELL

ELECTRICAL PANELS FOR THREE-PHASE CELL FRONT

COMPLETE PANEL BOARD SERIES

PANEL CODE	FC6 E	FC10 E	FC16 E
DESCRIPTION	Electrical panel for cold rooms evaporating unit only with electric defrost up to 6kW.	Electrical panel for cold rooms evaporating unit only with electric defrost up to 10kW.	Electrical panel for cold rooms evaporating unit only with electric defrost up to 16kW.
TECHNICAL FEATURES			
ELECTRONIC	Eliwell	Eliwell	Eliwell
BOX SIZE	370*275*175 mm	370*275*175 mm	370*275*175 mm
BOX SIZE COMPLETE WITH DOOR LOCK	370*275*175 mm	370*275*175 mm	370*275*175 mm
WEIGHT	5Kg	5Kg	6Kg
BOX LEVEL OF PROTECTION	IP65	IP65	IP65
RELATIVE HUMIDITY OF THE ENVIRONMENT	<90% RH	<90% RH	<90% RH
STORAGE TEMPERATURE	-10÷+60°C	-10÷+60°C	-10÷+60°C
WORKING TEMPERATURE	-5÷+45°C	-5÷+45°C	-5÷+45°C
SUPPLY	400V AC ±10% 50-60Hz	400V AC ±10% 50-60Hz	400V AC ±10% 50-60Hz
GENERAL PROTECTION	Standard Thermoswitch	Standard Thermoswitch	Standard Thermoswitch
SIGNALING AND ALARM	Led+Display	Led+Display	Led+Display
INPUTS			
CELL PROBE	NTC 10 Ohm 1%	NTC 10 Ohm 1%	NTC 10 Ohm 1%
EVAPORATOR PROBE	NTC 10 Ohm 1%	NTC 10 Ohm 1%	NTC 10 Ohm 1%
MICRO DOOR	Standard	Standard	Standard



PANEL CODE	FC6 E	FC10 E	FC16 E
------------	-------	--------	--------

OUTPUT			
ELECTRIC DEFROSTING	6000W three-phase	10000W three-phase	16000W three-phase
EVAPORATOR FANS	2000W single-phase/4000W three-phase	2000W single-phase/4000W three-phase	2000W single-phase/4000W three-phase
SOLENOIDE FAN	Standard	Standard	Standard
LIGHT CELL	850W single-phase	850W single-phase	850W single-phase
UNIT CONSENT	Standard (Voltage free contact)	Standard (Voltage free contact)	Standard (Voltage free contact)

OPTIONAL ACCESSORIES

RS485**	✓	✓	✓
---------	---	---	---



FC6 E \*



FC10 E \*



FC16 E \*

PANEL CODE	FC21 E	FC32 E	FC41 E
------------	--------	--------	--------

DESCRIPTION	Electrical panel for cold rooms evaporating unit only with electric defrost up to 21kW.	Electrical panel for cold rooms evaporating unit only with electric defrost up to 32kW.	Electrical panel for cold rooms evaporating unit only with electric defrost up to 41kW.
-------------	---	---	---

TECHNICAL FEATURES			
ELECTRONIC	Eliwell	Eliwell	Eliwell
BOX SIZE	600*400*200 mm	600*400*200 mm	600*400*200 mm
BOX SIZE COMPLETE WITH DOOR LOCK	600*400*235 mm	600*400*235 mm	600*400*235 mm
WEIGHT	12Kg	20Kg	20Kg
BOX LEVEL OF PROTECTION	IP65	IP65	IP65
RELATIVE HUMIDITY OF THE ENVIRONMENT	<90% RH	<90% RH	<90% RH
STORAGE TEMPERATURE	-10÷+60°C	-10÷+60°C	-10÷+60°C
WORKING TEMPERATURE	-5÷+45°C	-5÷+45°C	-5÷+45°C
SUPPLY	400V AC ±10% 50-60Hz	400V AC ±10% 50-60Hz	400V AC ±10% 50-60Hz
GENERAL PROTECTION	Standard Thermoswitch	Standard Thermoswitch	Standard Thermoswitch
SIGNALING AND ALARM	Led+Display	Led+Display	Led+Display

INPUTS			
CELL PROBE	NTC 10 Ohm 1%	NTC 10 Ohm 1%	NTC 10 Ohm 1%
EVAPORATOR PROBE	NTC 10 Ohm 1%	NTC 10 Ohm 1%	NTC 10 Ohm 1%
MICRO DOOR	Standard	Standard	Standard

\* **Accessories:** fixing brackets provided  
\*\* **Communication card for supervision**

All products have the possibility of customization with your own brand.  
Customization requires a minimum of lots to be established at the order stage.



PANEL CODE	FC21 E	FC32 E	FC41 E
OUTPUT			
ELECTRIC DEFROSTING	21000W three-phase	32000W three-phase	41000W three-phase
EVAPORATOR FANS	3 from 1000W single-phase 3 from 2000W three-phase	4 from 1500W single-phase 4 from 3000W three-phase	4 from 1500W single-phase 4 from 3000W three-phase
SOLENOIDE FAN	Standard	Standard	Standard
LIGHT CELL	Standard (Voltage free contact)	Standard (Voltage free contact)	Standard (Voltage free contact)
UNIT CONSENT	Standard (Voltage free contact)	Standard (Voltage free contact)	Standard (Voltage free contact)

OPTIONAL ACCESSORIES

RS485**	✓	✓	✓
---------	---	---	---



FC21 E \*



FC32 E \*



FC41 E \*

PANEL CODE	FC66 E	FC1010 E	FC1616 E
DESCRIPTION			
	Electrical panel for cold rooms only evaporating unit double evaporator with electric defrost up to 6kW.	Electric panel for cold rooms only double evaporator evaporator unit with electric defrost up to 10kW.	Electrical panel for cold rooms only evaporating unit double evaporator with electric defrost up to 16kW.
TECHNICAL FEATURES			
ELECTRONIC	Eliwell	Eliwell	Eliwell
BOX SIZE	600*400*200 mm	600*400*200 mm	600*400*200 mm
BOX SIZE COMPLETE WITH DOOR LOCK	600*400*235 mm	600*400*235 mm	600*400*235 mm
WEIGHT	12Kg	12Kg	13Kg
BOX LEVEL OF PROTECTION	IP65	IP65	IP65
RELATIVE HUMIDITY OF THE ENVIRONMENT	<90% RH	<90% RH	<90% RH
STORAGE TEMPERATURE	-10÷+60°C	-10÷+60°C	-10÷+60°C
WORKING TEMPERATURE	-5÷+45°C	-5÷+45°C	-5÷+45°C
SUPPLY	400V AC ±10% 50-60Hz	400V AC ±10% 50-60Hz	400V AC ±10% 50-60Hz
GENERAL PROTECTION	Standard Thermoswitch	Standard Thermoswitch	Standard Thermoswitch
SIGNALING AND ALARM	Led+Display	Led+Display	Led+Display

INPUTS

CELL PROBE	NTC 10 Ohm 1%	NTC 10 Ohm 1%	NTC 10 Ohm 1%
EVAPORATOR PROBE 1	External prodigies thermostat (not included)	External prodigies thermostat (not included)	External prodigies thermostat (not included)
EVAPORATOR PROBE 2	External prodigieses thermostat (not included)	External prodigies thermostat (not included)	External prodigies thermostat (not included)
MICRO DOOR	Standard	Standard	Standard

\* Accessories: fixing brackets provided  
\*\* Communication card for supervision

All products have the possibility of customization with your own brand.  
Customization requires a minimum of lots to be established at the order stage.





PANEL CODE	FC66 E	FC1010 E	FC1616 E
OUTPUT			
ELECTRIC DEFROST 1	6000W three-phase	10000W three-phase	16000W three-phase
ELECTRIC DEFROST 2	6000W three-phase	10000W three-phase	16000W three-phase
EVAPORATOR FANS 1	2000W single-phase/4000W three-phase	2000W single-phase/4000W three-phase	2000W single-phase/4000W three-phase
EVAPORATOR FANS 2	2000W single-phase/4000W three-phase	2000W single-phase/4000W three-phase	2000W single-phase/4000W three-phase
SOLENOIDE FAN	Standard	Standard	Standard
LIGHT CELL	850W single-phase	850W single-phase	850W single-phase
UNIT CONSENT 1	Standard (Voltage free contact)	Standard (Voltage free contact)	Standard (Voltage free contact)
UNIT CONSENT 2	Standard (Voltage free contact)	Standard (Voltage free contact)	Standard (Voltage free contact)

OPTIONAL ACCESSORIES

RS485**	✓	✓	✓
---------	---	---	---



FC66 E \*



FC1010 E \*



FC1616 E \*



At the end of each assembly phase, a strict testing procedure is carried out by specialized technicians.

\* **Accessories:** fixing brackets provided  
\*\* **Communication card for supervision**

All products have the possibility of customization with your own brand.  
Customization requires a minimum of lots to be established at the order stage.



## SERIES CS

Electrical panels for cell  
refrigerator for supermarkets

### PANEL BOARD SERIES

Series of electrical panels CS - Supermarket Cell are the ideal solution for the management and control of the cold room. The versatility of use and functional capabilities of these switchboards ensure maximum operational efficiency. You can request electronic according to your needs by choosing from the most important companies on the market: Dixell, Eliwell and Carel. Both the electronic for controlling the electronic valve and the differential protections are available on request. The whole SERIES CS is made with the best devices on the market with high-level TECHNICAL FEATURES and an excellent **value for money** ratio. Magnetothermic protections are installed. Standard on all devices.

CS3 C \_ CS3 D \_ CS3 E \_ CS10 C \_ CS10 D \_ CS10 E

PANEL CODE	CS3 C	CS3 D	CS3 E
DESCRIPTION	Electric panel for three-phase cold rooms with Carel electronic.	Electric panel for three-phase cold rooms with Dixell electronic.	Electric panel for three-phase cold rooms with Eliwell electronic.
TECHNICAL FEATURES			
ELECTRONIC	Carel	Dixell	Eliwell
BOX SIZE	455*275*140	455*275*140	455*275*140
WEIGHT	5Kg	5Kg	5Kg
BOX LEVEL OF PROTECTION	IP65	IP65	IP65
ENVIRONMENT RELATIVE HUMIDITY	<90% RH	<90% RH	<90% RH
STORAGE TEMPERATURE	-10÷+60°C	-10÷+60°C	-10÷+60°C
WORKING TEMPERATURE	-5÷+45°C	-5÷+45°C	-5÷+45°C
SUPPLY	230V AC ±10% 50-60Hz	230V AC ±10% 50-60Hz	230V AC ±10% 50-60Hz
GENERAL PROTECTION	Standard Thermoswitch	Standard Thermoswitch	Standard Thermoswitch
SIGNALING AND ALARM	Display	Display	Display
DEFROSTING MANAGEMENT WITH CLOCK	RTC	RTC	RTC
INPUTS			
CELL PROBE	NTC 10 Ohm 1%	NTC 10 Ohm 1%	NTC 10 Ohm 1%
EVAPORATOR PROBE	NTC 10 Ohm 1%	NTC 10 Ohm 1%	NTC 10 Ohm 1%
INPUT ALARM FROM UNITY	Standard	Standard	Standard
MICRO DOOR	Standard	Standard	Standard





PANEL CODE	CS3 C	CS3 D	CS3 E
OUTPUT			
ELECTRIC DEFROSTING	3000W single-phase	3000W single-phase	3000W single-phase
EVAPORATOR FANS	500W single-phase	500W single-phase	500W single-phase
SOLENOIDE FAN	Standard	Standard	Standard
LIGHT CELL	850W AC1	850W AC1	850W AC1
RS485 ACCESS	Standard	Standard	Standard



\* **Accessories:** fixing brackets provided

All products have the possibility of customization with your own brand. Customization requires a minimum of lots to be established at the order stage.

PANEL CODE	CS10 C	CS10 D	CS10 E
DESCRIPTION			
	Electric panel for three-phase cold rooms with Carel electronic.	Electric panel for three-phase cold rooms with Dixell electronic.	Electric panel for three-phase cold rooms with Eliwell electronic.
TECHNICAL FEATURES			
ELECTRONIC	Carel	Dixell	Eliwell
BOX SIZE	455*275*140	455*275*140	455*275*140
WEIGHT	5Kg	5Kg	5Kg
BOX LEVEL OF PROTECTION	IP65	IP65	IP65
ENVIRONMENT RELATIVE HUMIDITY	<90% RH	<90% RH	<90% RH
STORAGE TEMPERATURE	-10÷+60°C	-10÷+60°C	-10÷+60°C
WORKING TEMPERATURE	-5÷+45°C	-5÷+45°C	-5÷+45°C
SUPPLY	400V AC ±10% 50-60Hz	400V AC ±10% 50-60Hz	400V AC ±10% 50-60Hz
GENERAL PROTECTION	Standard Thermoswitch	Standard Thermoswitch	Standard Thermoswitch
SIGNALING AND ALARM	Display	Display	Display
DEFROSTING MANAGEMENT WITH CLOCK	RTC	RTC	RTC
INPUTS			
CELL PROBE	NTC 10 Ohm 1%	NTC 10 Ohm 1%	NTC 10 Ohm 1%
EVAPORATOR PROBE	NTC 10 Ohm 1%	NTC 10 Ohm 1%	NTC 10 Ohm 1%
INPUT ALARM FROM UNITY	Standard	Standard	Standard
MICRO DOOR	Standard	Standard	Standard





PANEL CODE	CS10 C	CS10 D	CS10 E
OUTPUT			
ELECTRIC DEFROSTING	10000W three-phase	10000W three-phase	10000W three-phase
EVAPORATOR FANS	500W single-phase	500W single-phase	500W single-phase
SOLENOIDE FAN	Standard	Standard	Standard
LIGHT CELL	850W AC1	850W AC1	850W AC1
RS485 ACCESS	Standard	Standard	Standard



\* **Accessories:** fixing brackets provided

All products have the possibility of customization with your own brand.  
Customization requires a minimum of lots to be established at the order stage.

Each member of Dieci Electric actively contributes to increasing the value of the entire production process of the company in the awareness that the real strength is in the team.



**BS**

The BS electrical panels are the ideal solution for the management and control of the refrigerated cabinet for both markets and supermarkets. This SERIES has been designed to meet any customer need. The electronic available for assembly is among the best available on the market: Dixell, Eliwell and Carel.

Both the electronic for controlling the electronic valve and the differential protections are available on request. The strategic choice of components makes this SERIES an excellent solution for those who want a good relationship between investment costs and benefits. Standard magnetothermic protections guarantee a high level of efficiency and functionality of the electrical panels. The carpentry was designed to optimize installation on the refrigerated cabinet. In fact, it has been designed for cable wiring and does not require drilling. The Cable Kit is optional.

**Electric panels for refrigerated counter**

## PANEL BOARD SERIES

BS3 C    \_    BS3 D    \_    BS3 E    \_    BS10 C    \_    BS10 D    \_    BS10 E

PANEL CODE	BS3 C	BS3 D	BS3 E
DESCRIPTION	Electrical panel for single-phase cold rooms with Carel electronic.	Electrical panel for single-phase cold rooms with Dixell electronic.	Electrical panel for single-phase cold rooms with Eliwell electronic.
TECHNICAL FEATURES			
ELECTRONIC	Carel	Dixell	Eliwell
BOX SIZE	100*540*177	100*540*177	100*540*177
WEIGHT	5Kg	5Kg	5Kg
BOX LEVEL OF PROTECTION	IP20	IP20	IP20
ENVIRONMENT RELATIVE HUMIDITY	<90% RH	<90% RH	<90% RH
STORAGE TEMPERATURE	-10÷+60°C	-10÷+60°C	-10÷+60°C
WORKING TEMPERATURE	-5÷+45°C	-5÷+45°C	-5÷+45°C
SUPPLY	230V AC ±10% 50-60Hz	230V AC ±10% 50-60Hz	230V AC ±10% 50-60Hz
GENERAL PROTECTION	Standard Thermoswitch	Standard Thermoswitch	Standard Thermoswitch
SIGNALING AND ALARM	Display	Display	Display
DEFROSTING MANAGEMENT WITH CLOCK	RTC	RTC	RTC
INPUTS			
CELL PROBE	NTC 10 Ohm 1%	NTC 10 Ohm 1%	NTC 10 Ohm 1%
EVAPORATOR PROBE	NTC 10 Ohm 1%	NTC 10 Ohm 1%	NTC 10 Ohm 1%
MICRO DOOR	Standard	Standard	Standard



PANEL CODE	BS3 C	BS3 D	BS3 E
OUTPUT			
ELECTRIC DEFROSTING	3000W single-phase	3000W single-phase	3000W single-phase
EVAPORATOR FANS	500W single-phase	500W single-phase	500W single-phase
SOLENOIDE FAN	Standard	Standard	Standard
LIGHT CELL	850W AC1	850W AC1	850W AC1
RS485 ACCESS	Standard	Standard	Standard



BS3 C



BS3 D



BS3 E

PANEL CODE	BS10 C	BS10 D	BS10 E
DESCRIPTION			
	Electric panel for three-phase cold rooms with Carel electronic.	Electrical panel for three-phase cold rooms with Dixell electronic.	Electrical panel for three-phase cold rooms with Eliwell electronic.
TECHNICAL FEATURES			
ELECTRONIC	Carel	Dixell	Eliwell
BOX SIZE	100*540*177	100*540*177	100*540*177
WEIGHT	5Kg	5Kg	5Kg
BOX LEVEL OF PROTECTION	IP20	IP20	IP20
ENVIRONMENT RELATIVE HUMIDITY	<90% RH	<90% RH	<90% RH
STORAGE TEMPERATURE	-10÷+60°C	-10÷+60°C	-10÷+60°C
WORKING TEMPERATURE	-5÷+45°C	-5÷+45°C	-5÷+45°C
SUPPLY	400V AC ±10% 50-60Hz	400V AC ±10% 50-60Hz	400V AC ±10% 50-60Hz
GENERAL PROTECTION	Standard Thermoswitch	Standard Thermoswitch	Standard Thermoswitch
SIGNALING AND ALARM	Display	Display	Display
DEFROSTING MANAGEMENT WITH CLOCK	RTC	RTC	RTC
INPUTS			
CELL PROBE	NTC 10 Ohm 1%	NTC 10 Ohm 1%	NTC 10 Ohm 1%
EVAPORATOR PROBE	NTC 10 Ohm 1%	NTC 10 Ohm 1%	NTC 10 Ohm 1%
MICRO DOOR	Standard	Standard	Standard





PANEL CODE	BS10 C	BS10 D	BS10 E
OUTPUT			
ELECTRIC DEFROSTING	10000W three-phase	10000W three-phase	10000W three-phase
EVAPORATOR FANS	500W single-phase	500W single-phase	500W single-phase
SOLENOIDE FAN	Standard	Standard	Standard
LIGHT CELL	850W AC1	850W AC1	850W AC1
RS485 ACCESS	Standard	Standard	Standard



Cable kit available on request on the whole BS series. Carpentry of the series with holes for the wiring cables. The carpentry prepared for drilling facilitates the positioning of the display during the installation phase. Easy removal of the top cover.



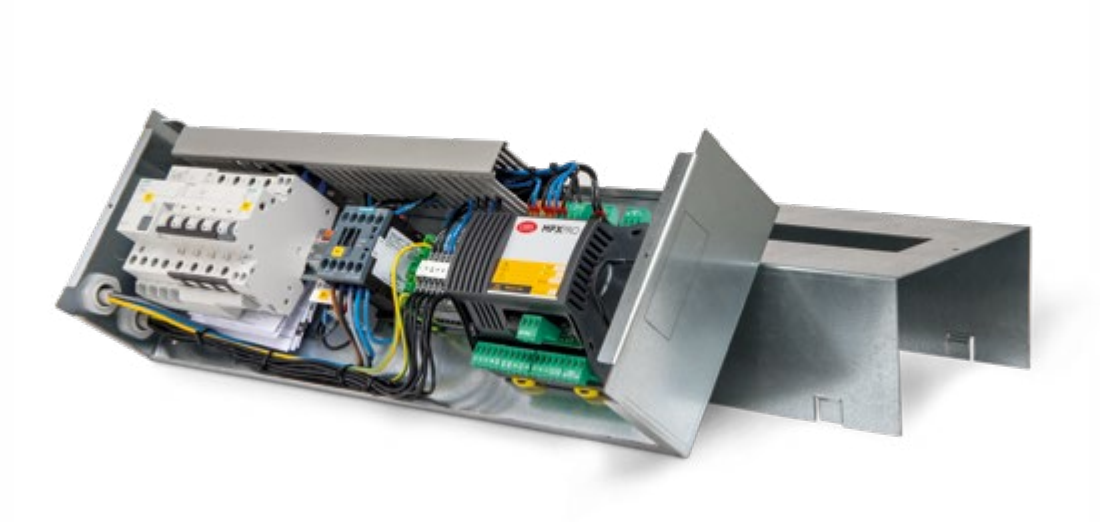
BS10 C



BS10 D



BS10 E



**Dieci Electric Srl**  
Via Fossa Lupo sn  
95025 Aci S. Antonio (CT)  
  
Via Primo Maggio, 64  
25013 Carpenedolo (BS)  
  
Tel. (0039) 095 77 93 647  
Fax (0039) 095 97 00 788  
  
**[info@diecielectric.it](mailto:info@diecielectric.it)**

Le immagini dei dispositivi sono puramente indicative. I dati sono indicativi e soggetti a variazioni.

